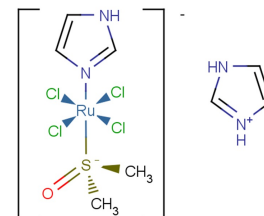


NAMI-A

Chemical Properties

CAS No.:	201653-76-1
Formula:	C ₅ H ₁₀ Cl ₄ N ₂ ORuS.C ₃ H ₄ N ₂ .H
Molecular Weight:	458.18
Appearance:	N/A
Storage:	0-4°C for short term (days to weeks), or -20°C for long term (months).



Biological Description

Description	NAMI-A is a ruthenium-based drug characterized by the selective activity against tumor metastases. NAMI-A inhibits adhesion and migration.
Targets(IC ₅₀)	Others: None
In vitro	NAMI-A can significantly affect tumor cells with metastatic ability. The half lifetime of NAMI-A elimination from the lungs is longer than for liver, kidney, and primary tumor. NAMI-A bound to collagen is active on tumor cells as shown in vitro by an invasion test, using a modified Boyden chamber and Matrigel, and it inhibits the matrix metallo-proteinases MMP-2 and MMP-9 at micromolar concentrations [1]. The ruthenium drug NAMI-A inhibits the adhesion and migration of colorectal cancer cells. NAMI-A decreases α5β1 integrin expression and FAK auto-phosphorylation on Tyr 397 [2].

Solubility Information

Solubility	H ₂ O: 8.28 mg/mL (18.07 mM) (< 1 mg/ml refers to the product slightly soluble or insoluble)
------------	---

Preparing Stock Solutions

	1mg	5mg	10mg
1 mM	2.183 mL	10.913 mL	21.825 mL
5 mM	0.437 mL	2.183 mL	4.365 mL
10 mM	0.218 mL	1.091 mL	2.183 mL
50 mM	0.044 mL	0.218 mL	0.437 mL

Please select the appropriate solvent to prepare the stock solution, according to the solubility of the product in different solvents. The storage conditions and period of the stock solution: - 80 °C for 6 months; - 20 °C for 1 month. Please use it as soon as possible.

Reference

1. Sava G et al. Dual Action of NAMI-A in inhibition of solid tumor metastasis: selective targeting of metastatic cells and binding to collagen. Clin Cancer Res. 2003 May;9(5):1898-905.
2. Pelillo C et al. Inhibition of adhesion, migration and of α5β1 integrin in the HCT-116 colorectal cancer cells treated with the ruthenium drug NAMI-A. J Inorg Biochem. 2016 Jul;160:225-35.

Inhibitors · Natural Compounds · Compound Libraries

This product is for Research Use Only · Not for Human or Veterinary or Therapeutic Use.

Tel:781-999-4286

E-mail:info@targetmol.com

Address:36 Washington Street,Wellesley Hills,MA 02481