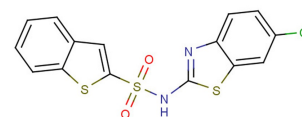


PDK1-IN-RS2

**Chemical Properties**

CAS No.: 1643958-89-7  
Formula: C<sub>15</sub>H<sub>9</sub>ClN<sub>2</sub>O<sub>2</sub>S<sub>3</sub>  
Molecular Weight: 380.89  
Appearance: N/A  
Storage: 0-4°C for short term (days to weeks), or -20°C for long term (months).

**Biological Description**

Description	PDK1-IN-RS2 inhibits the activation of the downstream kinases S6K1 by PDK1. PDK1-IN-RS2 is a mimic of the peptide docking motif (PIFtide) and is a substrate-selective PDK1 inhibitor (K <sub>d</sub> : 9 μM).
Targets(IC <sub>50</sub> )	PDK1: (K <sub>d</sub> ) 9 μM
In vitro	Because the sulfonamide is likely ionized under the crystallization conditions, the sulfonyl group of PDK1-IN-RS2 interacts with Arg131 through a salt bridge. PDK1-IN-RS2 stimulates the catalytic activity of PDK1 toward a peptide substrate by sixfold [1].

**Solubility Information**

Solubility	< 1 mg/ml refers to the product slightly soluble or insoluble
------------	---

## Preparing Stock Solutions

	1mg	5mg	10mg
1 mM	2.625 mL	13.127 mL	26.254 mL
5 mM	0.525 mL	2.625 mL	5.251 mL
10 mM	0.263 mL	1.313 mL	2.625 mL
50 mM	0.053 mL	0.263 mL	0.525 mL

Please select the appropriate solvent to prepare the stock solution, according to the solubility of the product in different solvents. The storage conditions and period of the stock solution: - 80 °C for 6 months; - 20 °C for 1 month. Please use it as soon as possible.

## Reference

1. Rettenmaier TJ, et al. A small-molecule mimic of a peptide docking motif inhibits the protein kinase PDK1. Proc Natl Acad Sci U S A. 2014 Dec 30;111(52):18590-5.

Inhibitors · Natural Compounds · Compound Libraries

This product is for Research Use Only · Not for Human or Veterinary or Therapeutic Use.

Tel:781-999-4286

E-mail:[info@targetmol.com](mailto:info@targetmol.com)

Address:36 Washington Street,Wellesley Hills,MA 02481