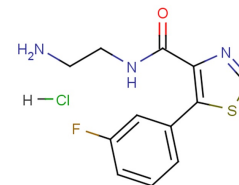


Ro 41-1049 hydrochloride

Chemical Properties

CAS No.:	127917-66-2
Formula:	C ₁₂ H ₁₃ ClFN ₃ OS
Molecular Weight:	301.77
Appearance:	N/A
Storage:	0-4°C for short term (days to weeks), or -20°C for long term (months).

**Biological Description**

Description	Ro 41-1049 hydrochloride is a reversible and selective inhibitor of monoamine oxidase-A (K _d : 16.5 and 64.4 nM, respectively).
Targets(IC ₅₀)	MAO-A: None
In vivo	Ro 41-1049 (20 mg/kg) pretreatment significantly increases dopamine formation following L-dopa administration (100 mg/kg IP) while decreasing the formation of 3,4-dihydroxyphenylacetic acid and homovanillic acid. Ro 41-1049 (1-50 mg/kg; intraperitoneal injection; for 3 hours; Sprague-Dawley rats) treatment inhibits dopamine metabolite formation and increases dopamine levels in a dose-dependent fashion [2].

Solubility Information

Solubility	DMSO: 32 mg/mL (106.04 mM) H ₂ O: 25 mg/mL (82.84 mM) (< 1 mg/ml refers to the product slightly soluble or insoluble)
------------	---

Preparing Stock Solutions

	1mg	5mg	10mg
1 mM	3.314 mL	16.569 mL	33.138 mL
5 mM	0.663 mL	3.314 mL	6.628 mL
10 mM	0.331 mL	1.657 mL	3.314 mL
50 mM	0.066 mL	0.331 mL	0.663 mL

Please select the appropriate solvent to prepare the stock solution, according to the solubility of the product in different solvents. The storage conditions and period of the stock solution: - 80 °C for 6 months; - 20 °C for 1 month. Please use it as soon as possible.

Reference

1. Cesura AM, et al. Characterization of the binding of [3H]Ro 41-1049 to the active site of human monoamine oxidase-A. Mol Pharmacol. 1990 Mar;37(3):358-66.
2. Brannan T, et al. Effect of a selective MAO-A inhibitor (Ro 41-1049) on striatal L-dopa and dopamine metabolism: an in vivo study. J Neural Transm Park Dis Dement Sect. 1994;8(1-2):99-105.

Inhibitors · Natural Compounds · Compound Libraries

This product is for Research Use Only · Not for Human or Veterinary or Therapeutic Use.

Tel:781-999-4286

E-mail:info@targetmol.com

Address:36 Washington Street,Wellesley Hills,MA 02481