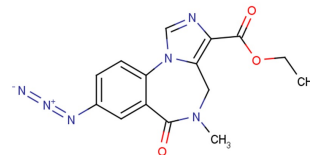


Ro15-4513

Chemical Properties

CAS No.:	91917-65-6
Formula:	C ₁₅ H ₁₄ N ₆ O ₃
Molecular Weight:	326.31
Appearance:	N/A
Storage:	0-4°C for short term (days to weeks), or -20°C for long term (months).



Biological Description

Description	Ro15-4513 is imidazobenzodiazepinone derivative and is a partial inverse agonist of benzodiazepine receptors. Ro15-4513 is an effective ethanol antagonist.
Targets(IC ₅₀)	BZR: None
In vitro	Ro15-4513 usually acts as a partial inverse agonist at GABAA receptors [3].
In vivo	Ro 15-4513 (i.p.; 3 mg/kg; 15 min before administration of 1.5 g/kg ethanol) reverses ethanol-induced sedation in GABAA receptor δ subunit-deficient mice. Ro 15-4513 (i.p.; 3 mg/kg; 10 min before being tested) fully inhibits the ethanol-induced (1.8 g/kg) reduction in total locomotor activity and partly the reduction in rearing [2].

Solubility Information

Solubility	< 1 mg/ml refers to the product slightly soluble or insoluble
------------	---

Preparing Stock Solutions

	1mg	5mg	10mg
1 mM	3.065 mL	15.323 mL	30.646 mL
5 mM	0.613 mL	3.065 mL	6.129 mL
10 mM	0.306 mL	1.532 mL	3.065 mL
50 mM	0.061 mL	0.306 mL	0.613 mL

Please select the appropriate solvent to prepare the stock solution, according to the solubility of the product in different solvents. The storage conditions and period of the stock solution: - 80 °C for 6 months; - 20 °C for 1 month. Please use it as soon as possible.

Reference

- Bonetti EP, et al. Ro 15-4513: partial inverse agonism at the BZR and interaction with ethanol. Pharmacol Biochem Behav. 1988 Nov;31(3):733-49.
- Suzdak PD, et al. Effects of Ro15-4513 and other benzodiazepine receptor inverse agonists on alcohol-induced intoxication in the rat. J Pharmacol Exp Ther. 1988 Jun;245(3):880-6.
- Linden AM, et al. Ro 15-4513 Antagonizes Alcohol-Induced Sedation in Mice Through $\alpha\beta\gamma 2$ -type GABA(A) Receptors. Front Neurosci. 2011 Jan 20;5:3.

Inhibitors · Natural Compounds · Compound Libraries

This product is for Research Use Only · Not for Human or Veterinary or Therapeutic Use.

Tel:781-999-4286

E-mail:info@targetmol.com

Address:36 Washington Street,Wellesley Hills,MA 02481