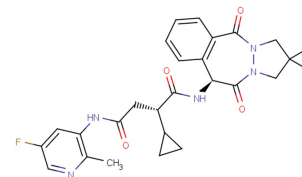


SPL-707

Chemical Properties

CAS No.:	2195361-33-0
Formula:	C ₂₇ H ₂₈ FN ₅ O ₄
Molecular Weight:	505.54
Appearance:	N/A
Storage:	0-4°C for short term (days to weeks), or -20°C for long term (months).

**Biological Description**

Description	SPL-707 is an effective and selective signal peptide peptidase-like 2a inhibitor (IC ₅₀ : 80 nM).
Targets(IC ₅₀)	SPPL2a: 80 nM
In vitro	SPL-707 shows 25-fold selectivity over SPP with an IC ₅₀ of 3.7 μM. SPL-707 shows 3-fold selectivity preference for SPPL2a over SPPL2b [1].
In vivo	SPL-707(doses ≤10 mg/kg, b.i.d. p.o., in rodents) obviously inhibits the processing of the SPPL2a substrate CD74/p8 fragment. Oral dosing of SPL-707 for 11 days at ≥10 mg/kg b.i.d. recapitulates the phenotype seen in Sppl2a knockout and ENU mutant mice [1].

Solubility Information

Solubility	< 1 mg/ml refers to the product slightly soluble or insoluble
------------	---

Preparing Stock Solutions

	1mg	5mg	10mg
1 mM	1.978 mL	9.89 mL	19.781 mL
5 mM	0.396 mL	1.978 mL	3.956 mL
10 mM	0.198 mL	0.989 mL	1.978 mL
50 mM	0.04 mL	0.198 mL	0.396 mL

Please select the appropriate solvent to prepare the stock solution, according to the solubility of the product in different solvents. The storage conditions and period of the stock solution: - 80 °C for 6 months; - 20 °C for 1 month. Please use it as soon as possible.

Reference

1. Velcicky J, et al. Discovery of the First Potent, Selective, and Orally Bioavailable Signal Peptide Peptidase-Like 2a (SPPL2a) Inhibitor Displaying Pronounced Immunomodulatory Effects In Vivo. J Med Chem. 2018 Feb 8;61(3):865-880.

Inhibitors · Natural Compounds · Compound Libraries

This product is for Research Use Only · Not for Human or Veterinary or Therapeutic Use.

Tel:781-999-4286

E-mail:info@targetmol.com

Address:36 Washington Street,Wellesley Hills,MA 02481