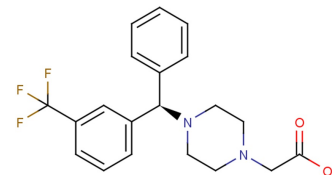


Tilapertin

Chemical Properties

CAS No.:	1000690-85-6
Formula:	C ₂₀ H ₂₁ F ₃ N ₂ O ₂
Molecular Weight:	378.39
Appearance:	N/A
Storage:	0-4°C for short term (days to weeks), or -20°C for long term (months).



Biological Description

Description	Tilapertin is an oral glycine transporter type-1 inhibitor.
Targets(IC ₅₀)	GlyT1: None
In vivo	In rats, Oral administration of Tilapertin dose-dependently increases cerebrospinal fluid glycine concentration [1].

Solubility Information

Solubility	< 1 mg/ml refers to the product slightly soluble or insoluble
------------	---

Preparing Stock Solutions

	1mg	5mg	10mg
1 mM	2.643 mL	13.214 mL	26.428 mL
5 mM	0.529 mL	2.643 mL	5.286 mL
10 mM	0.264 mL	1.321 mL	2.643 mL
50 mM	0.053 mL	0.264 mL	0.529 mL

Please select the appropriate solvent to prepare the stock solution, according to the solubility of the product in different solvents. The storage conditions and period of the stock solution: - 80 °C for 6 months; - 20 °C for 1 month. Please use it as soon as possible.

Reference

1. Dunayevich E, et al. Efficacy and safety of the glycine transporter type-1 inhibitor AMG 747 for the treatment of negative symptoms associated with schizophrenia. Schizophr Res. 2017 Apr;182:90-97.

Inhibitors · Natural Compounds · Compound Libraries

This product is for Research Use Only · Not for Human or Veterinary or Therapeutic Use.

Tel:781-999-4286

E-mail:info@targetmol.com

Address:36 Washington Street,Wellesley Hills,MA 02481