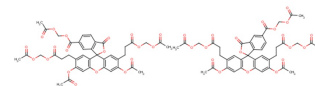


BCECF-AM

Chemical Properties

CAS No.:	117464-70-7
Formula:	C ₄₀ H ₃₆ O ₁₉
Molecular Weight:	820.7
Appearance:	N/A
Storage:	0-4°C for short term (days to weeks), or -20°C for long term (months).



Biological Description

Description	BCECF-AM is a cell membrane permeable compound used as a fluorescent indicator for intracellular pH.
Targets(IC ₅₀)	Others: None
In vitro	In pulmonary arterial smooth muscle cells (PASMC), BCECF-AM is used to measure changes in basal pHi and NHE activity induced by increasing concentrations of ET-1 (0.1-10 nM).

Solubility Information

Solubility	< 1 mg/ml refers to the product slightly soluble or insoluble
------------	---

Preparing Stock Solutions

	1mg	5mg	10mg
1 mM	1.218 mL	6.092 mL	12.185 mL
5 mM	0.244 mL	1.218 mL	2.437 mL
10 mM	0.122 mL	0.609 mL	1.218 mL
50 mM	0.024 mL	0.122 mL	0.244 mL

Please select the appropriate solvent to prepare the stock solution, according to the solubility of the product in different solvents. The storage conditions and period of the stock solution: - 80 °C for 6 months; - 20 °C for 1 month. Please use it as soon as possible.

Reference

1. Clark Undem, et al. Endothelin-1 Augments Na⁺/H⁺ Exchange Activity in Murine Pulmonary Arterial Smooth Muscle Cells via Rho Kinase. PLoS One. 2012; 7(9): e46303.

Inhibitors · Natural Compounds · Compound Libraries

This product is for Research Use Only · Not for Human or Veterinary or Therapeutic Use.

Tel:781-999-4286

E-mail:info@targetmol.com

Address:36 Washington Street,Wellesley Hills,MA 02481