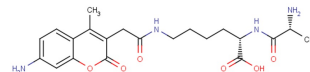


D-Ala-Lys-AMCA

Chemical Properties

| | |
|-------------------|--|
| CAS No.: | 375822-19-8 |
| Formula: | C ₂₁ H ₂₈ N ₄ O ₆ |
| Molecular Weight: | 432.47 |
| Appearance: | N/A |
| Storage: | 0-4°C for short term (days to weeks), or -20°C for long term (months). |



Biological Description

| | |
|----------------------------|--|
| Description | D-Ala-Lys-AMCA is a known substrate of proton-coupled oligopeptide transporter 1 (PEPT1) that emits blue fluorescence. D-Ala-Lys-AMCA may be transported into Caco-2 cells and liver cancer cells. |
| Targets(IC ₅₀) | Others: None |

Solubility Information

| | |
|------------|---|
| Solubility | < 1 mg/ml refers to the product slightly soluble or insoluble |
|------------|---|

Preparing Stock Solutions

| | 1mg | 5mg | 10mg |
|-------|----------|-----------|-----------|
| 1 mM | 2.312 mL | 11.561 mL | 23.123 mL |
| 5 mM | 0.462 mL | 2.312 mL | 4.625 mL |
| 10 mM | 0.231 mL | 1.156 mL | 2.312 mL |
| 50 mM | 0.046 mL | 0.231 mL | 0.462 mL |

Please select the appropriate solvent to prepare the stock solution, according to the solubility of the product in different solvents. The storage conditions and period of the stock solution: - 80 °C for 6 months; - 20 °C for 1 month. Please use it as soon as possible.

Reference

1. Gong Y, et al. Specific expression of proton-coupled oligopeptide transporter 1 in primary hepatocarcinoma-anovel strategy for tumor-targeted therapy. Oncol Lett. 2017 Oct;14(4):4158-4166.

Inhibitors · Natural Compounds · Compound Libraries

This product is for Research Use Only · Not for Human or Veterinary or Therapeutic Use.

Tel:781-999-4286

E-mail:info@targetmol.com

Address:36 Washington Street,Wellesley Hills,MA 02481