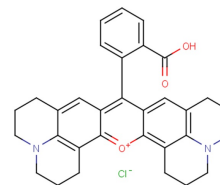


## Rhodamine 101 chloride

## Chemical Properties

CAS No.:	64339-18-0
Formula:	C <sub>32</sub> H <sub>31</sub> ClN <sub>2</sub> O <sub>3</sub>
Molecular Weight:	527.05
Appearance:	N/A
Storage:	0-4°C for short term (days to weeks), or -20°C for long term (months).



## Biological Description

Description	Rhodamine 101 chloride is a bright fluorescent dye (excitation: 565 nm, emission: 595 nm).
Targets(IC <sub>50</sub> )	Others: None

## Solubility Information

Solubility	Ethanol: 14.29 mg/mL (27.11 mM) H <sub>2</sub> O: 2 mg/mL (3.79 mM) ( < 1 mg/ml refers to the product slightly soluble or insoluble)
------------	--

## Preparing Stock Solutions

	1mg	5mg	10mg
1 mM	1.897 mL	9.487 mL	18.974 mL
5 mM	0.379 mL	1.897 mL	3.795 mL
10 mM	0.19 mL	0.949 mL	1.897 mL
50 mM	0.038 mL	0.19 mL	0.379 mL

Please select the appropriate solvent to prepare the stock solution, according to the solubility of the product in different solvents. The storage conditions and period of the stock solution: - 80 °C for 6 months; - 20 °C for 1 month. Please use it as soon as possible.

## Reference

1. Aigner, D., et al. New fluorescent perylene bisimide indicators--a platform for broadband pH optodes. Anal. Bioanal. Chem. 400(8), 2475-2485 (2011).
2. Crissman, H.A., et al. Rapid, one step staining procedures for analysis of cellular DNA and protein by single and dual laser flow cytometry. Cytometry 3(2), 84-90 (1982).

Inhibitors · Natural Compounds · Compound Libraries

This product is for Research Use Only · Not for Human or Veterinary or Therapeutic Use.

Tel:781-999-4286

E-mail:[info@targetmol.com](mailto:info@targetmol.com)

Address:36 Washington Street,Wellesley Hills,MA 02481