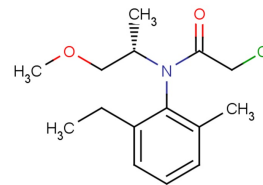


(S)-Metolachlor

Chemical Properties

CAS No.:	87392-12-9
Formula:	C ₁₅ H ₂₂ ClNO ₂
Molecular Weight:	283.79
Appearance:	N/A
Storage:	0-4°C for short term (days to weeks), or -20°C for long term (months).



Biological Description

Description	(S)-Metolachlor is a major pesticide in use, and is a derivative of aniline.
Targets(IC ₅₀)	Others: None

Solubility Information

Solubility	< 1 mg/ml refers to the product slightly soluble or insoluble
------------	---

Preparing Stock Solutions

	1mg	5mg	10mg
1 mM	3.524 mL	17.619 mL	35.237 mL
5 mM	0.705 mL	3.524 mL	7.047 mL
10 mM	0.352 mL	1.762 mL	3.524 mL
50 mM	0.07 mL	0.352 mL	0.705 mL

Please select the appropriate solvent to prepare the stock solution, according to the solubility of the product in different solvents. The storage conditions and period of the stock solution: - 80 °C for 6 months; - 20 °C for 1 month. Please use it as soon as possible.

Reference

1. Fauvelle V, et al. Simulated conservative tracer as a proxy for S-metolachlor concentration predictions compared to POCIS measurements in Arcachon Bay. Mar Pollut Bull. 2018 Aug;133:423-427.

Inhibitors · Natural Compounds · Compound Libraries

This product is for Research Use Only · Not for Human or Veterinary or Therapeutic Use.

Tel:781-999-4286

E-mail:info@targetmol.com

Address:36 Washington Street,Wellesley Hills,MA 02481