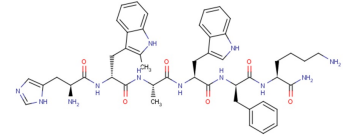


Examorelin

Chemical Properties

CAS No.:	140703-51-1
Formula:	C47H58N12O6
Molecular Weight:	887.06
Appearance:	N/A
Storage:	0-4°C for short term (days to weeks), or -20°C for long term (months).



Biological Description

Description	Examorelin is an agonist of growth hormone-releasing factor (GHRF), and for the treatment of cardiac diseases.
Targets(IC ₅₀)	hormone-releasing factor (GHRF): None
In vivo	hexarelin treatment protected cardiac function in the chronic phase as evidenced by higher ejection fraction and fractional shortening, as well as lower lung weight/body weight and lung weight/tibial length ratios, compared with vehicle treatment. Hexarelin treatment concurrently lowered plasma epinephrine and dopamine levels, and shifted the balance of autonomic nervous activity toward parasympathetic nervous activity as evidenced by a smaller low/high-frequency power ratio and larger normalized high-frequency power on heart rate variability analysis.

Solubility Information

Solubility	< 1 mg/ml refers to the product slightly soluble or insoluble
------------	---

Preparing Stock Solutions

	1mg	5mg	10mg
1 mM	1.127 mL	5.637 mL	11.273 mL
5 mM	0.225 mL	1.127 mL	2.255 mL
10 mM	0.113 mL	0.564 mL	1.127 mL
50 mM	0.023 mL	0.113 mL	0.225 mL

Please select the appropriate solvent to prepare the stock solution, according to the solubility of the product in different solvents. The storage conditions and period of the stock solution: - 80 °C for 6 months; - 20 °C for 1 month. Please use it as soon as possible.

Reference

- Yuanjie, Mao, Takeshi, et al. Hexarelin treatment in male ghrelin knockout mice after myocardial infarction.[J]. Endocrinology, 2013.
- Yuanjie Mao , Takeshi Tokudome , Ichiro Kishimoto. One dose of oral hexarelin protects chronic cardiac function after myocardial infarction. Peptides. 2014 Jun;56:156-62.

Inhibitors · Natural Compounds · Compound Libraries

This product is for Research Use Only · Not for Human or Veterinary or Therapeutic Use.

Tel:781-999-4286

E-mail:info@targetmol.com

Address:36 Washington Street,Wellesley Hills,MA 02481