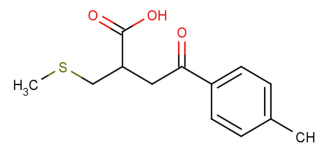


S-methyl-KE-298

Chemical Properties

CAS No.:	143584-75-2
Formula:	C ₁₃ H ₁₆ O ₃ S
Molecular Weight:	252.33
Appearance:	N/A
Storage:	0-4°C for short term (days to weeks), or -20°C for long term (months).



Biological Description

Description	S-methyl-KE-298 is the second main metabolite in plasma, is a methyl conjugate of deacetyl-KE-298. KE-298 inhibits matrix metalloproteinase (MMP-1) production from rheumatoid arthritis (RA) synovial cells.
-------------	---

Solubility Information

Solubility	< 1 mg/ml refers to the product slightly soluble or insoluble
------------	---

Preparing Stock Solutions

	1mg	5mg	10mg
1 mM	3.963 mL	19.815 mL	39.631 mL
5 mM	0.793 mL	3.963 mL	7.926 mL
10 mM	0.396 mL	1.982 mL	3.963 mL
50 mM	0.079 mL	0.396 mL	0.793 mL

Please select the appropriate solvent to prepare the stock solution, according to the solubility of the product in different solvents. The storage conditions and period of the stock solution: - 80 °C for 6 months; - 20 °C for 1 month. Please use it as soon as possible.

Reference

1. Yoshida H, Kohno Y, Endo H, et al. Identification of metabolites of KE-298, a new antirheumatic drug, and its physiological properties in rats.[J]. Biological & Pharmaceutical Bulletin, 1996, 19(3):424-9.
2. Honda S, et al. Expression of membrane-type 1 matrix metalloproteinase in rheumatoid synovial cells. Clin Exp Immunol. 2001 Oct;126(1):131-6.
3. Yoshida H, Kohno Y, Endo H, et al. Stereoselective disposition and chiral inversion of KE-298, a new antirheumatic drug, in rats[J]. Chirality, 2015, 9(1):22-28.

Inhibitors · Natural Compounds · Compound Libraries

This product is for Research Use Only · Not for Human or Veterinary or Therapeutic Use.

Tel:781-999-4286

E-mail:info@targetmol.com

Address:36 Washington Street,Wellesley Hills,MA 02481