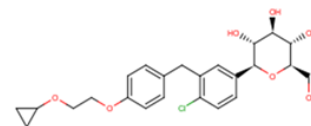


EGT1442

**Chemical Properties**

CAS No.:	1118567-05-7
Formula:	C <sub>24</sub> H <sub>29</sub> ClO <sub>7</sub>
Molecular Weight:	464.94
Appearance:	N/A
Storage:	0-4°C for short term (days to weeks), or -20°C for long term (months).

**Biological Description**

Description	EGT1442 is a potent, selective sodium glucose co-transporter 2 (SGLT2) inhibitor with IC <sub>50</sub> values of 5.6 $\mu$ M and 2 nM for human SGLT1 and SGLT2, respectively
Targets(IC <sub>50</sub> )	SGLT2: None
In vivo	EGT1442 produces a stable urinary excretion of glucose in rats and dogs with ED <sub>50</sub> values of 0.38 and 0.09 mg/kg, respectively, and reduces HbA(1c) and blood glucose in db/db mice in a concentration dependent manner.

**Solubility Information**

Solubility	DMSO: 100 mg/mL (215.08 mM) ( < 1 mg/ml refers to the product slightly soluble or insoluble)
------------	---

## Preparing Stock Solutions

	1mg	5mg	10mg
1 mM	2.151 mL	10.754 mL	21.508 mL
5 mM	0.43 mL	2.151 mL	4.302 mL
10 mM	0.215 mL	1.075 mL	2.151 mL
50 mM	0.043 mL	0.215 mL	0.43 mL

Please select the appropriate solvent to prepare the stock solution, according to the solubility of the product in different solvents. The storage conditions and period of the stock solution: - 80 °C for 6 months; - 20 °C for 1 month. Please use it as soon as possible.

Reference

1. Zhang W , Welihinda A , Mechanic J , et al. EGT1442, a potent and selective SGLT2 inhibitor, attenuates blood glucose and HbA1c levels in db/db mice and prolongs the survival of stroke-prone rats[J]. Pharmacological Research, 2011, 63(4):284-293.

[Inhibitors](#) · [Natural Compounds](#) · [Compound Libraries](#)

This product is for Research Use Only · Not for Human or Veterinary or Therapeutic Use.

Tel:781-999-4286

E-mail:[info@targetmol.com](mailto:info@targetmol.com)

Address:36 Washington Street,Wellesley Hills,MA 02481