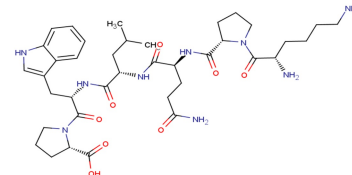


C-Reactive Protein (CRP) 201-206

Chemical Properties

CAS No.:	130348-99-1
Formula:	C ₃₈ H ₅₇ N ₉ O ₈
Molecular Weight:	767.91
Appearance:	N/A
Storage:	0-4°C for short term (days to weeks), or -20°C for long term (months).



Biological Description

Description	C-Reactive Protein (CRP) 201-206 is the 201-206 fragment of C-Reactive Protein. C-Reactive Protein (CRP), the prototypic marker of inflammation, is a cardiovascular risk marker and may promote atherogenesis.
-------------	---

Solubility Information

Solubility	H ₂ O: Soluble (< 1 mg/ml refers to the product slightly soluble or insoluble)
------------	--

Preparing Stock Solutions

	1mg	5mg	10mg
1 mM	1.302 mL	6.511 mL	13.022 mL
5 mM	0.26 mL	1.302 mL	2.604 mL
10 mM	0.13 mL	0.651 mL	1.302 mL
50 mM	0.026 mL	0.13 mL	0.26 mL

Please select the appropriate solvent to prepare the stock solution, according to the solubility of the product in different solvents. The storage conditions and period of the stock solution: - 80 °C for 6 months; - 20 °C for 1 month. Please use it as soon as possible.

Reference

- Devaraj S, et al. C-reactive protein stimulates superoxide anion release and tissue factor activity in vivo. *Atherosclerosis*. 2009 Mar;203(1):67-74.

Inhibitors · Natural Compounds · Compound Libraries

This product is for Research Use Only · Not for Human or Veterinary or Therapeutic Use.

Tel:781-999-4286

E-mail:info@targetmol.com

Address:36 Washington Street,Wellesley Hills,MA 02481