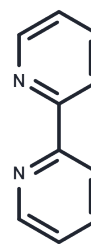


2,2'-Bipyridine

Chemical Properties

CAS No. :	366-18-7
Formula:	C ₁₀ H ₈ N ₂
Molecular Weight:	156.19
Appearance:	Solid
Storage:	Powder: -20°C for 3 years In solvent: -80°C for 1 year



Biological Description

Description	2,2'-Bipyridine is a unique bioactive natural product molecular scaffold commonly used in the core structure of many chelating ligands. 2,2'-Bipyridine acts as a bridge in the arrangement of the catalytic center. 2,2'-Bipyridine has good redox stability and glycemic activity.
Targets(IC50)	Others
In vivo	2,2'-Bipyridine (40 mg/kg; sc; once) produces initial hyperglycemia (an increase of 53.8 mg/100 mL in 2 hours), and then a short hypoglycemic phase occurs in 24 hours, without permanent diabetes [2].

Preparing Stock Solutions

	1mg	5mg	10mg
1 mM	6.4025 mL	32.0123 mL	64.0246 mL
5 mM	1.2805 mL	6.4025 mL	12.8049 mL
10 mM	0.6402 mL	3.2012 mL	6.4025 mL
50 mM	0.128 mL	0.6402 mL	1.2805 mL

Please select the appropriate solvent to prepare the stock solution, according to the solubility of the product in different solvents. Please use it as soon as possible.

Reference

Chen D, et al. Discovery of caerulomycin/collismycin-type 2,2'-bipyridine natural products in the genomic era. J Ind Microbiol Biotechnol. 2019;46(3-4):459-468.

Kenny A D, et al. The hyperglycemic activity of 2, 2'-bipyridine[J]. Journal of Pharmacology and Experimental Therapeutics, 1962, 135(3): 317-322.

Inhibitor · Natural Compounds · Compound Libraries · Recombinant Proteins

This product is for Research Use Only. Not for Human or Veterinary or Therapeutic Use

Tel:781-999-4286 E_mail:info@targetmol.com Address:34 Washington Street,Wellesley Hills,MA 02481