

Dichlorophen

Chemical Properties

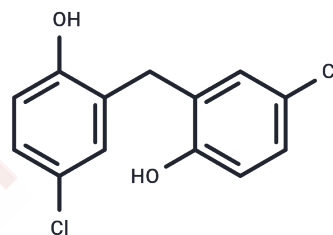
CAS No. : 97-23-4

Formula: C₁₃H₁₀Cl₂O₂

Molecular Weight: 269.12

Appearance: no data available

Storage: Powder: -20°C for 3 years | In solvent: -80°C for 1 year



Biological Description

Description	Dichlorophen (DDM) is a nontoxic laxative vermicide of chlorinated phenol compound. Dichlorophen is used as a veterinary fungicide, anthelmintic, and anti-protozoan, as well as an ingredient in antimicrobial soaps and shampoos. This agent probably acts by increasing the clearing of intestinal contents, thereby eradicating tapeworm infections from the intestines.
Targets(IC ₅₀)	Antibacterial,Parasite,Antifungal
Kinase Assay	Effect of inhibition of Acetaminophen on COX-1 and COX-2 activity in human whole blood: For COX-1 assay, aliquots of human whole blood drawn from healthy volunteers without anticoagulant are transferred to glass tubes containing Acetaminophen or DMSO, serum is separated by centrifugation after clotting, and serum TxB ₂ levels are determined. For COX-2 assay, aliquots of heparinized whole blood are incubated with LPS (10 µg/mL) and aspirin (10 µg/mL), plus Acetaminophen or DMSO for 24 hours at 37 °C, plasma is separated by centrifugation, and PGE ₂ levels are determined subsequently. The degree of COX-1 or COX-2 inhibition is calculated as the percentage change of plasma eicosanoid (TxB ₂ for COX-1 and PGE ₂ for COX-2).Concentration response curves are fitted by a sigmoidal regression with variable slope for both enzymatic assays, and the 50% inhibitory concentration (IC ₅₀) values are derived by using of PRISM Version 3.0.

Solubility Information

Solubility	DMSO: 45 mg/mL (167.21 mM),Sonication is recommended. (< 1 mg/ml refers to the product slightly soluble or insoluble)
------------	--

Preparing Stock Solutions

	1mg	5mg	10mg
1 mM	3.7158 mL	18.5791 mL	37.1581 mL
5 mM	0.7432 mL	3.7158 mL	7.4316 mL
10 mM	0.3716 mL	1.8579 mL	3.7158 mL
50 mM	0.0743 mL	0.3716 mL	0.7432 mL

Please select the appropriate solvent to prepare the stock solution, according to the solubility of the product in different solvents. Please use it as soon as possible.

Reference

Langrand J, et al. Clin Toxicol (Phila). 2013 Mar;51(3):178-81.

Inhibitor · Natural Compounds · Compound Libraries · Recombinant Proteins

This product is for Research Use Only. Not for Human or Veterinary or Therapeutic Use

Tel:781-999-4286 E_mail:info@targetmol.com Address:36 Washington Street,Wellesley Hills,MA 02481