

(±) Clopidogrel hydrogen sulfate

Chemical Properties

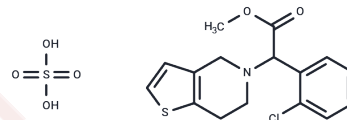
CAS No. : 135046-48-9

Formula: C₁₆H₁₆ClNO₂S · H₂SO₄

Molecular Weight: 419.9

Appearance: no data available

Storage: Powder: -20°C for 3 years | In solvent: -80°C for 1 year



Biological Description

Description	(±) Clopidogrel hydrogen sulfate (Iscover) , an antiplatelet agent pharmacologically and structurally analogous to ticlopidine, is used to inhibit blood clots in various conditions such as cerebrovascular disease, peripheral vascular disease, and coronary artery disease.
Targets(IC50)	P2Y Receptor

Solubility Information

Solubility	DMSO: 60 mg/mL (142.89 mM),Sonication is recommended. (< 1 mg/ml refers to the product slightly soluble or insoluble)
------------	--

Preparing Stock Solutions

	1mg	5mg	10mg
1 mM	2.3815 mL	11.9076 mL	23.8152 mL
5 mM	0.4763 mL	2.3815 mL	4.763 mL
10 mM	0.2382 mL	1.1908 mL	2.3815 mL
50 mM	0.0476 mL	0.2382 mL	0.4763 mL

Please select the appropriate solvent to prepare the stock solution, according to the solubility of the product in different solvents. Please use it as soon as possible.

Reference

Dorsam RT, et al. Hematology. 2003 Dec;8(6):359-65.

Inhibitor · Natural Compounds · Compound Libraries · Recombinant Proteins

This product is for Research Use Only· Not for Human or Veterinary or Therapeutic Use

Tel:781-999-4286 E_mail:info@targetmol.com Address:36 Washington Street,Wellesley Hills,MA 02481