

## Escitalopram

## Chemical Properties

CAS No. : 128196-01-0

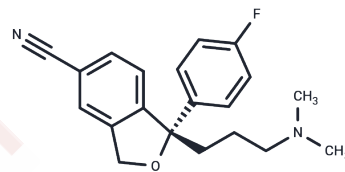
Formula: C<sub>20</sub>H<sub>21</sub>FN<sub>2</sub>O

Molecular Weight: 324.39

Appearance: no data available

store at low temperature

Storage: Pure form: -20°C for 3 years | In solvent: -80°C for 1 year



## Biological Description

Description	Escitalopram (Seroplex) is a furan carbonitrile that is one of the SEROTONIN UPTAKE INHIBITORS used as an antidepressant. The drug is also effective in reducing ethanol uptake in alcoholics and is used in depressed patients who also suffer from tardive dyskinesia in preference to tricyclic antidepressants, which aggravate this condition.
Targets(IC <sub>50</sub> )	5-HT Receptor, Adrenergic Receptor, AChR, Norepinephrine, Histamine Receptor, Dopamine Receptor, Serotonin Transporter

## Solubility Information

Solubility	DMSO: 45 mg/mL (138.72 mM), Sonication is recommended. (< 1 mg/mL refers to the product slightly soluble or insoluble)
------------	---

## Preparing Stock Solutions

	1mg	5mg	10mg
1 mM	3.0827 mL	15.4135 mL	30.8271 mL
5 mM	0.6165 mL	3.0827 mL	6.1654 mL
10 mM	0.3083 mL	1.5414 mL	3.0827 mL
50 mM	0.0617 mL	0.3083 mL	0.6165 mL

Please select the appropriate solvent to prepare the stock solution, according to the solubility of the product in different solvents. Please use it as soon as possible.

## Reference

Owens JM, et al. Encephale. 2002 Jul-Aug;28(4):350-5.

Shi T S, Li W Y, Chen Y M, et al. The antidepressant-like effects of escitalopram in mice require salt-inducible kinase 1 and CREB-regulated transcription co-activator 1 in the paraventricular nucleus of the hypothalamus. Journal of Affective Disorders. 2023

**Inhibitor · Natural Compounds · Compound Libraries · Recombinant Proteins**

This product is for Research Use Only· Not for Human or Veterinary or Therapeutic Use

Tel:781-999-4286    E\_mail:info@targetmol.com    Address:36 Washington Street,Wellesley Hills,MA 02481