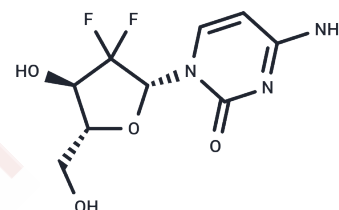


## Gemcitabine

### Chemical Properties

CAS No. :	95058-81-4
Formula:	C <sub>9</sub> H <sub>11</sub> F <sub>2</sub> N <sub>3</sub> O <sub>4</sub>
Molecular Weight:	263.2
Appearance:	no data available
Storage:	keep away from direct sunlight,store at low temperature
	Powder: -20°C for 3 years   In solvent: -80°C for 1 year



### Biological Description

Description	Gemcitabine (LY188011) is a synthetic cytosine nucleoside derivative and an inhibitor of DNA synthesis. Gemcitabine has antitumor and antimetabolic activities. Gemcitabine induces autophagy and apoptosis.
Targets(IC50)	Apoptosis,Nucleoside Antimetabolite/Analog,Autophagy,DNA/RNA Synthesis
In vitro	<p><b>METHODS:</b> PDAC-derived paired primary cancer cells (PCCs) PCC-1, PCC-2, PCC-5, PCC-6, and PDAC cells BxPC-3, Mia PaCa-2, and Panc-1 were treated with Gemcitabine (0.001-1000 μM) for 48 h, and the cells were assayed for cell growth inhibition using MTT.</p> <p><b>RESULTS:</b> Gemcitabine dose-dependently inhibited the growth of PCC-1, PCC-2, PCC-5, PCC-6, BxPC-3, Mia PaCa-2, and Panc-1 cells with IC<sub>50</sub> of 1.2/0.3/1.2/4.3/4.2/7.9/10.5 μM, respectively.[1]</p> <p><b>METHODS:</b> Human pancreatic cancer cells PK-1 were treated with Gemcitabine (30 nM) for 24-48 h. The cell cycle was examined by Flow Cytometry.</p> <p><b>RESULTS:</b> Gemcitabine induced an increase in the percentage of PK-1 cells in the G<sub>0</sub>/G<sub>1</sub> phase and a decrease in the percentage of S-phase and G<sub>2</sub>/M cells, and Gemcitabine induced S-phase cell cycle arrest in PK-1 cells. [2]</p> <p><b>METHODS:</b> Human lung cancer cells SPC-A1 and A549 were transfected with GFP-labeled LC3, incubated with Gemcitabine (5 μM) for 24 h, and then LC3 expression was detected by confocal laser scanning microscopy.</p> <p><b>RESULTS:</b> The accumulation of LC3-II is a marker of autophagy. Gemcitabine significantly increased the GFP-LC3 spots in the tumor cells, indicating an increase in the level of autophagy. [3]</p>
In vivo	<p><b>METHODS:</b> To detect anti-tumor activity in vivo, Gemcitabine (20 mg/kg) was intraperitoneally injected into BALB/cAjl-nu/nu mice bearing human high-grade meningioma tumor HKBMM twice a week for four weeks.</p> <p><b>RESULTS:</b> Gemcitabine treatment not only inhibited tumorigenesis but also tumor growth. Gemcitabine blocked the cell cycle progression and promoted apoptosis in tumor cells in vivo. Gemcitabine exerted potent anti-tumor activity against high-grade meningiomas through cytostatic and cytotoxic mechanisms. [4]</p> <p><b>METHODS:</b> To assay antitumor activity in vivo, Gemcitabine (50 mg/kg/twice weekly/peritoneal injection) and DMAPT (40 mg/kg/day/gavage) were administered to LSL-KrasG12D/+; LSL-Trp53R172H; and Pdx-1-Cre mutant mice bearing pancreatic cancer tumors.</p>

**RESULTS:** Gemcitabine or the DMAPT/Gemcitabine combination significantly increased median survival (254.5 or 255 versus 217.5 days) and decreased the incidence and diversity of pancreatic adenocarcinomas. Gemcitabine treatment increased plasma levels of IL-1 $\alpha$ , IL-1 $\beta$ , and IL-17 in mice. While DMAPT/Gemcitabine decreased the levels of IL-12p40, MCP-1, MIP-1 $\beta$ , eotaxin and TNF- $\alpha$ , all target genes of  $\kappa$ B. [5]

Cell Research	The cytotoxic effect of gemcitabine was evaluated with the MTT assay. SPC-A1 or A549 cells were treated with gemcitabine (0.05–500 $\mu$ M) for 24 h. Then, 10 $\mu$ l of MTT (5 mg/ml in PBS) was added to each well and incubated for 4 h at 37 $^{\circ}$ C. Then, the formazan crystals were solubilized with 200 $\mu$ l DMSO. The absorbance at 570 nm was measured using an automatic multiwell spectrophotometer. The experiment was repeated four times for each group [3].
Animal Research	At 1 month of age, LSL-Kras G12D/+; LSL-Trp53 R172H; Pdx-1-Cre mice are randomized into treatment groups (placebo, DMAPT, Gemcitabine, DMAPT/Gemcitabine). Placebo (vehicle=hydroxylpropyl methylcellulose, 0.2% Tween 80 [HPMT]) and DMAPT (40 mg/kg body weight in HPMT) are administered by oral gastric lavage once daily. Gemcitabine (50 mg/kg body weight in PBS) is administered by intraperitoneal injection twice weekly. Mouse weight is monitored weekly. Treatment is continued until mice show signs of lethargy, abdominal distension or weight loss at which time they are sacrificed. Successful excision-recombination events are confirmed in the pancreata of mice by detecting the presence of a single LoxP site [5].

### Solubility Information

Solubility	H <sub>2</sub> O: 6.25 mg/mL (23.75 mM), Sonication is recommended. DMSO: 125 mg/mL (474.92 mM), Sonication is recommended. Ethanol: 12.5 mg/mL (47.49 mM), Sonication is recommended. 5% DMSO+95% Saline: 0.75 mg/mL (2.85 mM), Solution. (< 1 mg/ml refers to the product slightly soluble or insoluble)
------------	--

### Preparing Stock Solutions

	1mg	5mg	10mg
1 mM	3.7994 mL	18.997 mL	37.9939 mL
5 mM	0.7599 mL	3.7994 mL	7.5988 mL
10 mM	0.3799 mL	1.8997 mL	3.7994 mL
50 mM	0.076 mL	0.3799 mL	0.7599 mL

Please select the appropriate solvent to prepare the stock solution, according to the solubility of the product in different solvents. Please use it as soon as possible.

### Reference

- Amrutkar M, et al. Differential Gemcitabine Sensitivity in Primary Human Pancreatic Cancer Cells and Paired Stellate Cells Is Driven by Heterogenous Drug Uptake and Processing. *Cancers (Basel)*. 2020 Dec 3;12(12):3628.
- Li Y, Tang S, Shi X, et al. Metabolic classification suggests the GLUT1/ALDOB/G6PD axis as a therapeutic target in chemotherapy-resistant pancreatic cancer. *Cell Reports Medicine*. 2023
- Yao Z, Zhang H, Huang K, et al. Niraparib perturbs autophagosome-lysosome fusion in pancreatic ductal adenocarcinoma and exhibits anticancer potential against gemcitabine-resistant PDAC. *Translational Oncology*. 2025, 51: 102206.
- Liu L, Liu S, Deng P, et al. Targeting the IRAK1-S100A9 Axis Overcomes Resistance to Paclitaxel in Nasopharyngeal Carcinoma[J]. *Cancer Research*.
- Feng M, Jiao Q, Ren Y, et al. The interaction between UBR7 and PRMT5 drives PDAC resistance to gemcitabine by regulating glycolysis and immune microenvironment. *Cell Death & Disease*. 2024, 15(10): 758.
- Namima D, et al. The Effect of Gemcitabine on Cell Cycle Arrest and microRNA Signatures in Pancreatic Cancer Cells. *In Vivo*. 2020 Nov-Dec;34(6):3195-3203.
- Shi Y H, Xu Q C, Zhu Y Q, et al. Imatinib facilitates gemcitabine sensitivity by targeting epigenetically activated PDGFC signaling in pancreatic cancer. *Molecular Therapy*. 2022
- Zhao F, Huang Y, Zhang Y, et al. SQLE inhibition suppresses the development of pancreatic ductal adenocarcinoma and enhances its sensitivity to chemotherapeutic agents in vitro. *Molecular Biology Reports*. 2022: 1-9
- Wu HM, et al. Gemcitabine-Induced Autophagy Protects Human Lung Cancer Cells from Apoptotic Death. *Lung*. 2016 Dec;194(6):959-966.
- Liu L, Liu S, Deng P, et al. Targeting the IRAK1-S100A9 Axis Overcomes Resistance to Paclitaxel in Nasopharyngeal Carcinoma. *Cancer Research*. 2021, 81(5): 1413-1425.
- Takeda H, et al. Antitumor activity of gemcitabine against high-grade meningioma in vitro and in vivo. *Oncotarget*. 2017 Jun 29;8(53):90996-91008.
- Sun Y, Ren D, Zhou Y, et al. Histone acetyltransferase 1 promotes gemcitabine resistance by regulating the PVT1/EZH2 complex in pancreatic cancer. *Cell Death & Disease*. 2021, 12(10): 1-13.
- Yip-Schneider MT, et al. Dimethylaminoparthenolide and gemcitabine: a survival study using a genetically engineered mouse model of pancreatic cancer. *BMC Cancer*. 2013 Apr 17;13:194.
- Lou M, et al. Physical interaction between human ribonucleotide reductase large subunit and thioredoxin increases colorectal cancer malignancy. *J Biol Chem*. 2017 Jun 2;292(22):9136-9149.
- Chang Z, Zhang Y, Liu J, et al. GATA1 Promotes Gemcitabine Resistance in Pancreatic Cancer through Antiapoptotic Pathway. *Journal of Oncology*. 2019 Apr 10;2019:9474273
- Thieulent C, Hue E, Sutton G, et al. Identification of antiviral compounds against equid herpesvirus-1 using real-time cell assay screening: efficacy of decitabine and valganciclovir alone or in combination. *Antiviral Research*. 2020: 104931
- Wang Y, et al. Licoricidin enhances gemcitabine-induced cytotoxicity in osteosarcoma cells by suppressing the Akt and NF- $\kappa$ B signal pathways. *Chem Biol Interact*. 2018 May 18;290:44-51.
- Thieulent C, Hue E, Sutton G, et al. Identification of antiviral compounds against equid herpesvirus-1 using real-time cell assay screening: efficacy of decitabine and valganciclovir alone or in combination[J]. *Antiviral Research*. 2020: 104931
- Xu H, Tan M, Hou G Q, et al. Blockade of DDR1/PYK2/ERK signaling suggesting SH2 superbinder as a novel autophagy inhibitor for pancreatic cancer. *Cell Death & Disease*. 2023, 14(12): 811.
- Chang Z, Zhang Y, Liu J, et al. GATA1 Promotes Gemcitabine Resistance in Pancreatic Cancer through Antiapoptotic Pathway[J]. *Journal of Oncology*. 2019 Apr 10;2019:9474273.
- Tan X D, Luo C F, Liang S Y. Antihyperlipidemic drug rosuvastatin suppressed tumor progression and potentiated chemosensitivity by downregulating CCNA2 in lung adenocarcinoma. *Journal of Chemotherapy*. 2024: 1-13.

**Inhibitor · Natural Compounds · Compound Libraries · Recombinant Proteins**

**This product is for Research Use Only. Not for Human or Veterinary or Therapeutic Use**

Tel: 781-999-4286    E\_mail: info@targetmol.com    Address: 36 Washington Street, Wellesley Hills, MA 02481