

Labetalol hydrochloride

Chemical Properties

CAS No. : 32780-64-6

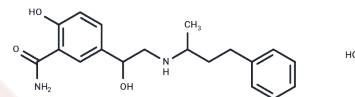
Formula: C₁₉H₂₅ClN₂O₃

Molecular Weight: 364.87

Appearance: no data available

Storage: store at low temperature

Powder: -20°C for 3 years | In solvent: -80°C for 1 year



Biological Description

Description	Labetalol hydrochloride (Sch-15719W), a salicylamide derivative, is a non-cardioselective blocker of β -adrenergic receptors and α 1-adrenergic receptors.
Targets(IC50)	Adrenergic Receptor

Solubility Information

Solubility	Ethanol: 7 mg/mL (19.18 mM),Sonication is recommended. DMSO: 67 mg/mL (183.63 mM),Sonication is recommended. H2O: 8 mg/mL (21.93 mM),Sonication is recommended. (< 1 mg/ml refers to the product slightly soluble or insoluble)
------------	--

Preparing Stock Solutions

	1mg	5mg	10mg
1 mM	2.7407 mL	13.7035 mL	27.407 mL
5 mM	0.5481 mL	2.7407 mL	5.4814 mL
10 mM	0.2741 mL	1.3704 mL	2.7407 mL
50 mM	0.0548 mL	0.2741 mL	0.5481 mL

Please select the appropriate solvent to prepare the stock solution, according to the solubility of the product in different solvents. Please use it as soon as possible.

Reference

Riva E, et al. Br J Pharmacol. 1991 Dec;104(4):823-8.

Inhibitor · Natural Compounds · Compound Libraries · Recombinant Proteins

This product is for Research Use Only· Not for Human or Veterinary or Therapeutic Use

Tel:781-999-4286

E_mail:info@targetmol.com

Address:36 Washington Street,Wellesley Hills,MA 02481