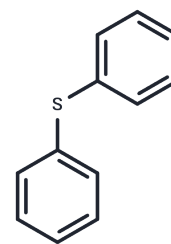


Diphenyl sulfide

Chemical Properties

CAS No. :	139-66-2
Formula:	C ₁₂ H ₁₀ S
Molecular Weight:	186.27
Appearance:	no data available
Storage:	Pure form: -20°C for 3 years In solvent: -80°C for 1 year



Biological Description

Description	Diphenyl sulfide (Phenyl sulfide) is used as pesticide, medicine, dye intermediates.
Targets(IC50)	Others

Solubility Information

Solubility	DMSO: 55 mg/mL (295.27 mM), Sonication is recommended. (< 1 mg/ml refers to the product slightly soluble or insoluble)
------------	---

Preparing Stock Solutions

	1mg	5mg	10mg
1 mM	5.3686 mL	26.8428 mL	53.6855 mL
5 mM	1.0737 mL	5.3686 mL	10.7371 mL
10 mM	0.5369 mL	2.6843 mL	5.3686 mL
50 mM	0.1074 mL	0.5369 mL	1.0737 mL

Please select the appropriate solvent to prepare the stock solution, according to the solubility of the product in different solvents. Please use it as soon as possible.

Reference

Michida T, et al. Yakugaku Zasshi. 1999 Oct;119(10):780-5.

Inhibitor · Natural Compounds · Compound Libraries · Recombinant Proteins

This product is for Research Use Only. Not for Human or Veterinary or Therapeutic Use

Tel: 781-999-4286 E_mail: info@targetmol.com Address: 36 Washington Street, Wellesley Hills, MA 02481