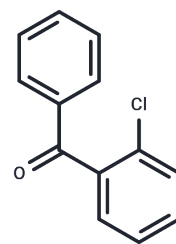


(2-Chlorophenyl)phenyl-methanone

Chemical Properties

CAS No. : 5162-03-8
 Formula: C₁₃H₉ClO
 Molecular Weight: 216.66
 Appearance: no data available
 Storage: Powder: -20°C for 3 years | In solvent: -80°C for 1 year



Biological Description

Description	(2-Chlorophenyl)phenyl-methanone is used as pharmaceutical intermediate.
Targets(IC50)	Others

Solubility Information

Solubility	DMSO: 50 mg/mL (230.78 mM), Sonication is recommended. (< 1 mg/mL refers to the product slightly soluble or insoluble)
------------	------------------------------------------------------------------------------------------------------------------------------

Preparing Stock Solutions

	1mg	5mg	10mg
1 mM	4.6155 mL	23.0776 mL	46.1553 mL
5 mM	0.9231 mL	4.6155 mL	9.2311 mL
10 mM	0.4616 mL	2.3078 mL	4.6155 mL
50 mM	0.0923 mL	0.4616 mL	0.9231 mL

Please select the appropriate solvent to prepare the stock solution, according to the solubility of the product in different solvents. Please use it as soon as possible.

Reference

Sancho MI, et al. Carbohydr Res. 2011 Sep 27;346(13):1978-84.

Inhibitor · Natural Compounds · Compound Libraries · Recombinant Proteins

This product is for Research Use Only. Not for Human or Veterinary or Therapeutic Use

Tel: 781-999-4286 E_mail: info@targetmol.com Address: 36 Washington Street, Wellesley Hills, MA 02481