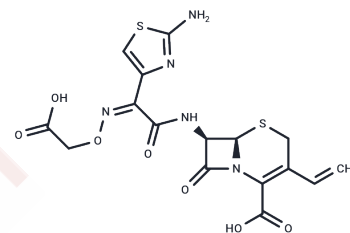


Cefixime

Chemical Properties

CAS No. :	79350-37-1
Formula:	C ₁₆ H ₁₅ N ₅ O ₇ S ₂
Molecular Weight:	453.45
Appearance:	no data available
Storage:	Powder: -20°C for 3 years In solvent: -80°C for 1 year



Biological Description

Description	Cefixime (FR-17027) is a broad-spectrum, third-generation cephalosporin antibiotic derived semisynthetically from the marine fungus <i>Cephalosporium acremonium</i> with antibacterial activity. As does penicillin, the beta-lactam antibiotic cefixime inhibits bacterial cell wall synthesis by disrupting peptidoglycan synthesis, resulting in a reduction in bacterial cell wall stability and bacterial cell lysis. Stable in the presence of a variety of beta-lactamases, this agent is more active against gram-negative bacteria and less active against gram-positive bacteria compared to second-generation cephalosporins.
Targets(IC50)	Antibacterial,Antibiotic
Cell Research	The morphological changes of serovar Typhimurium FP39 in THP-1 cells are studied by light microscopy and transmission electron microscopy. Infected THP-1 cells are treated for 4 h with 0.5 µg of cefixime/mL. (Only for Reference)

Solubility Information

Solubility	Ethanol: hardly dissolve, H ₂ O: Insoluble, DMSO: 50 mg/mL (110.27 mM),Sonication is recommended. (< 1 mg/ml refers to the product slightly soluble or insoluble)
------------	---

Preparing Stock Solutions

	1mg	5mg	10mg
1 mM	2.2053 mL	11.0266 mL	22.0531 mL
5 mM	0.4411 mL	2.2053 mL	4.4106 mL
10 mM	0.2205 mL	1.1027 mL	2.2053 mL
50 mM	0.0441 mL	0.2205 mL	0.4411 mL

Please select the appropriate solvent to prepare the stock solution, according to the solubility of the product in different solvents. Please use it as soon as possible.

Reference

Takahata S, et al. Antimicrob Agents ChemOthers. 2006 Nov;50(11):3638-45.

Inhibitor · Natural Compounds · Compound Libraries · Recombinant Proteins

This product is for Research Use Only· Not for Human or Veterinary or Therapeutic Use

Tel:781-999-4286 E_mail:info@targetmol.com Address:36 Washington Street,Wellesley Hills,MA 02481