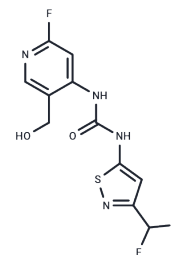


## BRM/BRG1 ATP Inhibitor-1

## Chemical Properties

CAS No. :	2270879-17-7
Formula:	C <sub>11</sub> H <sub>9</sub> F <sub>3</sub> N <sub>4</sub> O <sub>2</sub> S
Molecular Weight:	318.27
Appearance:	no data available
Storage:	Powder: -20°C for 3 years   In solvent: -80°C for 1 year



## Biological Description

Description	BRM/BRG1 ATP Inhibitor-1 is an allosteric dual Brahma homolog (BRM)/SWI/SNF related matrix-associated actin-dependent regulator of chromatin subfamily A member 2 (SMARCA2) and BRG1/SMARCA4 ATPase activity inhibitor (IC <sub>50</sub> s<0.005 μM).
Targets(IC <sub>50</sub> )	Epigenetic Reader Domain

## Solubility Information

Solubility	DMSO: 250 mg/mL (785.50 mM), Sonication is recommended. (< 1 mg/ml refers to the product slightly soluble or insoluble)
------------	--

## Preparing Stock Solutions

	1mg	5mg	10mg
1 mM	3.142 mL	15.7099 mL	31.4199 mL
5 mM	0.6284 mL	3.142 mL	6.284 mL
10 mM	0.3142 mL	1.571 mL	3.142 mL
50 mM	0.0628 mL	0.3142 mL	0.6284 mL

Please select the appropriate solvent to prepare the stock solution, according to the solubility of the product in different solvents. Please use it as soon as possible.

## Reference

Papillon JPN, et al. Discovery of Orally Active Inhibitors of Brahma Homolog (BRM)/SMARCA2 ATPase Activity for the Treatment of Brahma Related Gene 1 (BRG1)/SMARCA4-Mutant Cancers. J Med Chem. 2018 Nov 21;61(22):10155-10172

Yao X, Hong J H, Nargund A M, et al. PBRM1-deficient PBAF complexes target aberrant genomic loci to activate the NF-κB pathway in clear cell renal cell carcinoma. Nature Cell Biology. 2023: 1-13.

**Inhibitor · Natural Compounds · Compound Libraries · Recombinant Proteins**

This product is for Research Use Only. Not for Human or Veterinary or Therapeutic Use

Tel: 781-999-4286 E\_mail: info@targetmol.com Address: 36 Washington Street, Wellesley Hills, MA 02481