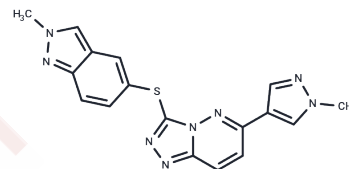


## c-Met inhibitor 1

## Chemical Properties

CAS No. : 1357072-61-7  
 Formula: C<sub>17</sub>H<sub>14</sub>N<sub>8</sub>S  
 Molecular Weight: 362.41  
 Appearance: no data available  
 Storage: Powder: -20°C for 3 years | In solvent: -80°C for 1 year



## Biological Description

Description	c-Met inhibitor 1 is a c-Met receptor signaling pathway inhibitor, used for the treatment of cancer including glioblastoma, gastric, and pancreatic cancer.
Targets(IC50)	c-Met/HGFR

## Solubility Information

Solubility	DMSO: 18 mg/mL (49.67 mM), Sonication is recommended. (< 1 mg/ml refers to the product slightly soluble or insoluble)
------------	--

## Preparing Stock Solutions

	1mg	5mg	10mg
1 mM	2.7593 mL	13.7965 mL	27.5931 mL
5 mM	0.5519 mL	2.7593 mL	5.5186 mL
10 mM	0.2759 mL	1.3797 mL	2.7593 mL
50 mM	0.0552 mL	0.2759 mL	0.5519 mL

Please select the appropriate solvent to prepare the stock solution, according to the solubility of the product in different solvents. Please use it as soon as possible.

## Reference

PCT Int. Appl. (2012), WO 2012015677 A1 20120202.

Inhibitor · Natural Compounds · Compound Libraries · Recombinant Proteins

This product is for Research Use Only. Not for Human or Veterinary or Therapeutic Use

Tel: 781-999-4286 E\_mail: info@targetmol.com Address: 36 Washington Street, Wellesley Hills, MA 02481