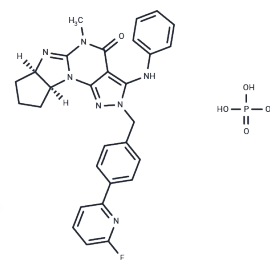


ITI-214

Chemical Properties

CAS No. : 1642303-38-5
 Formula: C₂₉H₂₉N₇O₅P
 Molecular Weight: 605.56
 Appearance: no data available
 Storage: Powder: -20°C for 3 years | In solvent: -80°C for 1 year



Biological Description

Description	ITI-214 is a picomolar PDE1 inhibitor with excellent selectivity against other PDE family members and against a panel of enzymes, receptors, transporters, and ion channels, exhibits potent PDE1 inhibitory activity (K _i = 58 pM).
Targets(IC ₅₀)	PDE

Solubility Information

Solubility	DMSO: 30 mg/mL (49.54 mM), Sonication is recommended. (< 1 mg/ml refers to the product slightly soluble or insoluble)
------------	--

Preparing Stock Solutions

	1mg	5mg	10mg
1 mM	1.6514 mL	8.2568 mL	16.5136 mL
5 mM	0.3303 mL	1.6514 mL	3.3027 mL
10 mM	0.1651 mL	0.8257 mL	1.6514 mL
50 mM	0.033 mL	0.1651 mL	0.3303 mL

Please select the appropriate solvent to prepare the stock solution, according to the solubility of the product in different solvents. Please use it as soon as possible.

Reference

Lawrence Wennogle. Novel uses. From PCT Int. Appl. (2014), WO 2014145617 A2 20140918.
 Peng Li , et al. Salt crystals. From PCT Int. Appl. (2013), WO 2013192556 A2 20131227.
 Allen A. Fienberg, et al. Organic compounds. From PCT Int. Appl. (2010), WO 2010132127 A1 20101118.
 Li P, et al. Discovery of Potent and Selective Inhibitors of Phosphodiesterase 1 for the Treatment of Cognitive Impairment Associated with Neurodegenerative and Neuropsychiatric Diseases. J Med Chem. 2016 Feb 11;59(3): 1149-64.

Inhibitor · Natural Compounds · Compound Libraries · Recombinant Proteins

This product is for Research Use Only· Not for Human or Veterinary or Therapeutic Use

Tel:781-999-4286 E_mail:info@targetmol.com Address:36 Washington Street,Wellesley Hills,MA 02481