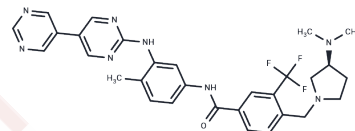


Lyn-IN-1

Chemical Properties

CAS No. : 887650-05-7
 Formula: C₃₀H₃₁F₃N₈O
 Molecular Weight: 576.62
 Appearance: no data available
 Storage: keep away from direct sunlight, store at low temperature
 Powder: -20°C for 3 years | In solvent: -80°C for 1 year



Biological Description

| | |
|----------------------------|---|
| Description | Lyn-IN-1 (Bafetinib analog) is a selective, potent dual inhibitor of Bcr-Abl and Lyn. |
| Targets(IC ₅₀) | Bcr-Abl, Src |

Solubility Information

| | |
|------------|--|
| Solubility | DMSO: 45 mg/mL (78.041 mM), Sonication is recommended. (< 1 mg/mL refers to the product slightly soluble or insoluble) |
|------------|--|

Preparing Stock Solutions

| | 1mg | 5mg | 10mg |
|-------|-----------|-----------|------------|
| 1 mM | 1.7342 mL | 8.6712 mL | 17.3424 mL |
| 5 mM | 0.3468 mL | 1.7342 mL | 3.4685 mL |
| 10 mM | 0.1734 mL | 0.8671 mL | 1.7342 mL |
| 50 mM | 0.0347 mL | 0.1734 mL | 0.3468 mL |

Please select the appropriate solvent to prepare the stock solution, according to the solubility of the product in different solvents. Please use it as soon as possible.

Reference

From PCT Int.Appl.(2014), WO2014169128A1

Inhibitor · Natural Compounds · Compound Libraries · Recombinant Proteins

This product is for Research Use Only. Not for Human or Veterinary or Therapeutic Use

Tel: 781-999-4286 E_mail: info@targetmol.com Address: 36 Washington Street, Wellesley Hills, MA 02481