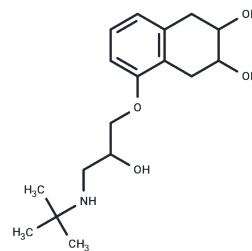


Nadolol

Chemical Properties

CAS No. :	42200-33-9
Formula:	C ₁₇ H ₂₇ NO ₄
Molecular Weight:	309.4
Appearance:	no data available
Storage:	Powder: -20°C for 3 years In solvent: -80°C for 1 year



Biological Description

Description	Nadolol is a non-selective beta-adrenergic antagonist with antihypertensive and antiarrhythmic activities. Nadolol competitively blocks beta-1 adrenergic receptors located in the heart and vascular smooth muscle, inhibiting the activities of the catecholamines epinephrine and norepinephrine and producing negative inotropic and chronotropic effects. This agent exhibits antiarrhythmic activity via the impairment of atrioventricular (AV) node conduction and a corresponding reduction in sinus rate. In the kidney, inhibition of the beta-2 receptor within the juxtaglomerular apparatus results in the inhibition of renin production and a subsequent reduction in angiotensin II and aldosterone levels, thus inhibiting angiotensin II-dependent vasoconstriction and aldosterone-dependent water retention.
Targets(IC ₅₀)	Adrenergic Receptor

Solubility Information

Solubility	DMSO: 197.2 mM, Sonication is recommended. (< 1 mg/ml refers to the product slightly soluble or insoluble)
------------	---

Preparing Stock Solutions

	1mg	5mg	10mg
1 mM	3.2321 mL	16.1603 mL	32.3206 mL
5 mM	0.6464 mL	3.2321 mL	6.4641 mL
10 mM	0.3232 mL	1.616 mL	3.2321 mL
50 mM	0.0646 mL	0.3232 mL	0.6464 mL

Please select the appropriate solvent to prepare the stock solution, according to the solubility of the product in different solvents. Please use it as soon as possible.

Reference

Wheeldon NM, et al. Br J Clin Pharmacol. 1994 Aug;38(2):103-8.

Inhibitor · Natural Compounds · Compound Libraries · Recombinant Proteins

This product is for Research Use Only· Not for Human or Veterinary or Therapeutic Use

Tel:781-999-4286 E_mail:info@targetmol.com Address:36 Washington Street,Wellesley Hills,MA 02481