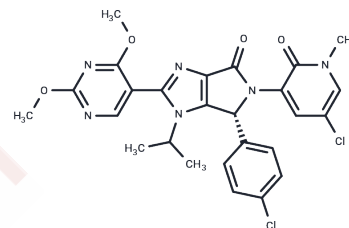


## Siremadlin (R Enantiomer)

## Chemical Properties

CAS No. : 1448867-42-2  
 Formula: C<sub>26</sub>H<sub>24</sub>Cl<sub>2</sub>N<sub>6</sub>O<sub>4</sub>  
 Molecular Weight: 555.41  
 Appearance: no data available  
 Storage: Powder: -20°C for 3 years | In solvent: -80°C for 1 year



## Biological Description

Description	Siremadlin R Enantiomer is the R enantiomer of Siremadlin. Siremadlin is a potent and highly specific inhibitor of MDM-2/p53.
Targets(IC50)	Others

## Solubility Information

Solubility	DMSO: 56.75 mg/mL (102.18 mM), Sonication is recommended. (< 1 mg/ml refers to the product slightly soluble or insoluble)
------------	--

## Preparing Stock Solutions

	1mg	5mg	10mg
1 mM	1.8005 mL	9.0024 mL	18.0047 mL
5 mM	0.3601 mL	1.8005 mL	3.6009 mL
10 mM	0.180 mL	0.9002 mL	1.8005 mL
50 mM	0.036 mL	0.180 mL	0.3601 mL

Please select the appropriate solvent to prepare the stock solution, according to the solubility of the product in different solvents. Please use it as soon as possible.

Inhibitor · Natural Compounds · Compound Libraries · Recombinant Proteins

This product is for Research Use Only· Not for Human or Veterinary or Therapeutic Use

Tel: 781-999-4286 E\_mail: info@targetmol.com Address: 36 Washington Street, Wellesley Hills, MA 02481