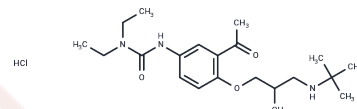


Chemical Properties

Storage: Powder: -20°C for 3 years | In solvent: -80°C for 1 year



Description	Celiprolol hydrochloride (Selectrol) is a cardioselective beta-1 adrenergic antagonist that has intrinsic sympathomimetic activity. It is used in the management of ANGINA PECTORIS and HYPERTENSION.
Targets(IC50)	Adrenergic Receptor

Solubility	DMSO: 10 mM, Sonication is recommended. (< 1 mg/ml refers to the product slightly soluble or insoluble)
------------	---

	1mg	5mg	10mg
1 mM	2.4041 mL	12.0204 mL	24.0408 mL
5 mM	0.4808 mL	2.4041 mL	4.8082 mL
10 mM	0.2404 mL	1.202 mL	2.4041 mL
50 mM	0.0481 mL	0.2404 mL	0.4808 mL

Abdelkrim MA, et al. Can J Physiol Pharmacol. 2013 Oct;91(10):791-6.

www.targetmol.com