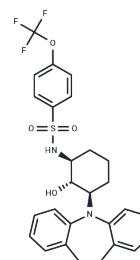


## SMAP-2

## Chemical Properties

CAS No. : 1809068-70-9  
 Formula: C<sub>27</sub>H<sub>27</sub>F<sub>3</sub>N<sub>2</sub>O<sub>4</sub>S  
 Molecular Weight: 532.57  
 Appearance: no data available  
 Storage: Powder: -20°C for 3 years | In solvent: -80°C for 1 year



## Biological Description

Description	SMAP-2 is an orally bioavailable activator of phosphatase 2A (PP2A) which binds to the PP2A Aα scaffold subunit to drive conformational changes in PP2A. It inhibits the growth of KRAS-mutant lung cancers .
Targets(IC50)	Phosphatase

## Preparing Stock Solutions

	1mg	5mg	10mg
1 mM	1.8777 mL	9.3884 mL	18.7769 mL
5 mM	0.3755 mL	1.8777 mL	3.7554 mL
10 mM	0.1878 mL	0.9388 mL	1.8777 mL
50 mM	0.0376 mL	0.1878 mL	0.3755 mL

Please select the appropriate solvent to prepare the stock solution, according to the solubility of the product in different solvents. Please use it as soon as possible.

## Reference

Sangodkar J, et al. Activation of tumor suppressor protein PP2A inhibits KRAS-driven tumor growth. J Clin Invest. 2017 Jun 1;127(6):2081-2090.

Inhibitor · Natural Compounds · Compound Libraries · Recombinant Proteins

This product is for Research Use Only· Not for Human or Veterinary or Therapeutic Use

Tel:781-999-4286 E\_mail:info@targetmol.com Address:36 Washington Street,Wellesley Hills,MA 02481