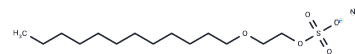


Sodium laureth sulfate

Chemical Properties

CAS No. :	9004-82-4
Formula:	C ₁₄ H ₃₀ NaO ₅ S
Molecular Weight:	333.44
Appearance:	no data available
	keep away from direct sunlight
Storage:	Pure form: -20°C for 3 years In solvent: -80°C for 1 year



Biological Description

Description	Sodium laureth sulfate (Sodium lauryl polyoxyethylene ether sulfate) is an anionic surfactant, with excellent decontamination, wetting, emulsification, dispersion, solubilizing performance and foaming property.
Targets(IC50)	Others

Solubility Information

Solubility	H ₂ O: 31 mg/mL (92.97 mM), Sonication is recommended. (< 1 mg/ml refers to the product slightly soluble or insoluble)
------------	--

Preparing Stock Solutions

	1mg	5mg	10mg
1 mM	2.999 mL	14.9952 mL	29.9904 mL
5 mM	0.5998 mL	2.999 mL	5.9981 mL
10 mM	0.2999 mL	1.4995 mL	2.999 mL
50 mM	0.060 mL	0.2999 mL	0.5998 mL

Please select the appropriate solvent to prepare the stock solution, according to the solubility of the product in different solvents. Please use it as soon as possible.

Inhibitor · Natural Compounds · Compound Libraries · Recombinant Proteins

This product is for Research Use Only · Not for Human or Veterinary or Therapeutic Use

Tel: 781-999-4286 E_mail: info@targetmol.com Address: 36 Washington Street, Wellesley Hills, MA 02481