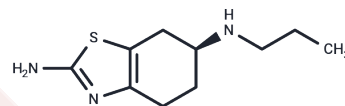


## Pramipexole

## Chemical Properties

CAS No. :	104632-26-0
Formula:	C <sub>10</sub> H <sub>17</sub> N <sub>3</sub> S
Molecular Weight:	211.33
Appearance:	no data available
Storage:	Powder: -20°C for 3 years   In solvent: -80°C for 1 year



## Biological Description

Description	Pramipexole (SND 919) is a selective dopamine receptor agonist used in the therapy of Parkinson disease. Pramipexole therapy is associated with a low rate of transient serum enzyme elevations during treatment but has not been implicated in cases of clinically apparent acute liver injury.
Targets(IC50)	Dopamine Receptor

## Solubility Information

Solubility	DMSO: 75 mg/mL (354.9 mM),Sonication is recommended. H2O: < 1 mg/mL (insoluble or slightly soluble), Ethanol: 39 mg/mL (184.55 mM),Sonication is recommended. (< 1 mg/ml refers to the product slightly soluble or insoluble)
------------	--

## Preparing Stock Solutions

	1mg	5mg	10mg
1 mM	4.7319 mL	23.6597 mL	47.3194 mL
5 mM	0.9464 mL	4.7319 mL	9.4639 mL
10 mM	0.4732 mL	2.366 mL	4.7319 mL
50 mM	0.0946 mL	0.4732 mL	0.9464 mL

Please select the appropriate solvent to prepare the stock solution, according to the solubility of the product in different solvents. Please use it as soon as possible.

## Reference

- Kvernmo T, et al. Curr Top Med Chem. 2008;8(12):1049-67.  
 Xu P, Huang S, Mao C, et al. Structures of the human dopamine D3 receptor-Gi complexes. Molecular Cell. 2021 Mar 18;81(6):1147-1159.e4. doi: 10.1016/j.molcel.2021.01.003. Epub 2021 Feb 5.  
 Xu Z, Guo L, Yu J, et al.Ligand recognition and G protein coupling of trace amine receptor TAAR1.Nature.2023: 1-3.

**Inhibitor · Natural Compounds · Compound Libraries · Recombinant Proteins**

This product is for Research Use Only· Not for Human or Veterinary or Therapeutic Use

Tel:781-999-4286    E\_mail:info@targetmol.com    Address:36 Washington Street,Wellesley Hills,MA 02481