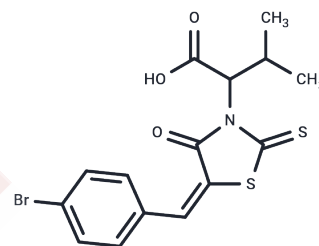


BH3I-1

Chemical Properties

CAS No. :	300817-68-9
Formula:	C ₁₅ H ₁₄ BrNO ₃ S ₂
Molecular Weight:	400.31
Appearance:	no data available
Storage:	Powder: -20°C for 3 years In solvent: -80°C for 1 year



Biological Description

Description	BH3I-1 (BHI1) is a Bcl-2 antagonist.
Targets(IC50)	Bcl-2 Family,E1/E2/E3 Enzyme
In vitro	BH3I-1 inhibits Bcl-xL heterodimerization in vitro. It also induces cytochrome c release [1]. BH3I-1, while inhibiting its reported target Bcl-2/Bim and Bcl-xL/Bim, shows significant inhibition of both the p53/hDM2 and p300/Hif-1a interactions[2].
Cell Research	Cells (5×10 ⁴ cells per well) are seeded into white 96-well plates (Costar) and treated with various concentrations of the compounds for 48 h. For zVAD-FMK protection experiments, cells are preincubated with 100 μM zVAD-FMK for 1 h before the addition of chemicals. Cell viability is determined with an MTS assay. For PI staining experiments, cells are grown in 24-well plates and then incubated with 2 μg ml/L PI. Cell death is determined by FACS analysis.(Only for Reference)

Solubility Information

Solubility	H ₂ O: < 1 mg/mL (insoluble or slightly soluble), DMSO: 60 mg/mL (149.88 mM),Sonication is recommended. Ethanol: 11 mg/mL (27.48 mM),Sonication is recommended. (< 1 mg/ml refers to the product slightly soluble or insoluble)
------------	---

Preparing Stock Solutions

	1mg	5mg	10mg
1 mM	2.4981 mL	12.4903 mL	24.9806 mL
5 mM	0.4996 mL	2.4981 mL	4.9961 mL
10 mM	0.2498 mL	1.249 mL	2.4981 mL
50 mM	0.050 mL	0.2498 mL	0.4996 mL

Please select the appropriate solvent to prepare the stock solution, according to the solubility of the product in different solvents. Please use it as soon as possible.

Reference

Degterev A, et al. Nat Cell Biol. 2001, 3(2):173-82.

Porter JR, et al. Chem Commun (Camb). 2010, 46(42):8020-2.

Inhibitor · Natural Compounds · Compound Libraries · Recombinant Proteins

This product is for Research Use Only. Not for Human or Veterinary or Therapeutic Use

Tel: 781-999-4286

E_mail: info@targetmol.com

Address: 36 Washington Street, Wellesley Hills, MA 02481