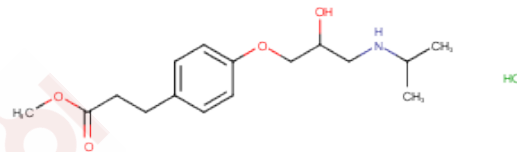


## Esmolol hydrochloride

## Chemical Properties

CAS No. : 81161-17-3  
Formula: C<sub>16</sub>H<sub>25</sub>NO<sub>4</sub>·HCl  
Molecular Weight: 331.15  
Appearance: no data available  
Storage: Powder: -20°C for 3 years | In solvent: -80°C for 1 year



## Biological Description

Description	Esmolol is a cardioselective beta-blocker used in parenteral forms in the treatment of arrhythmias and severe hypertension. Esmolol has not been linked to instances of clinically apparent drug induced liver injury.
Targets(IC50)	Mitophagy,Adrenergic Receptor,Autophagy
In vitro	The main active site of Esmolol is the sinus node and AV node conduction system, and Esmolol has a rapid onset of action and inactivation.
In vivo	The main active site of Esmolol is the sinus node and AV node conduction system, and Esmolol has a rapid onset of action and inactivation.

## Solubility Information

Solubility	DMSO: 198.9 mM,Sonication is recommended. H2O: 150.68 mM,Sonication is recommended. (< 1 mg/ml refers to the product slightly soluble or insoluble)
------------	---

## Preparing Stock Solutions

	1mg	5mg	10mg
1 mM	3.0198 mL	15.0989 mL	30.1978 mL
5 mM	0.604 mL	3.0198 mL	6.0396 mL
10 mM	0.302 mL	1.5099 mL	3.0198 mL
50 mM	0.0604 mL	0.302 mL	0.604 mL

Please select the appropriate solvent to prepare the stock solution, according to the solubility of the product in different solvents. Please use it as soon as possible.

### Reference

- Wiest D, et al. Clin Pharmacokinet, 1995, 28(3), 190-202.  
Suzuki T, et al. Crit Care Med, 2005, 33(10), 2294-2301.  
Sasao J, et al. Can J Anaesth, 2001, 48(10), 985-989.  
Sugiyama A, et al. J Cardiovasc Pharmacol, 1999, 34(1), 70-77.

**Inhibitor · Natural Compounds · Compound Libraries · Recombinant Proteins**

This product is for Research Use Only. Not for Human or Veterinary or Therapeutic Use

Tel: 781-999-4286    E\_mail: [info@targetmol.com](mailto:info@targetmol.com)    Address: 36 Washington Street, Wellesley Hills, MA 02481