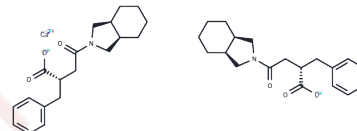


Mitiglinide calcium hydrate

Chemical Properties

CAS No. :	207844-01-7
Formula:	C ₃₈ H ₅₂ CaN ₂ O ₈
Molecular Weight:	704.91
Appearance:	no data available
Storage:	Powder: -20°C for 3 years In solvent: -80°C for 1 year



Biological Description

Description	Mitiglinide calcium hydrate (S-21403 calcium hydrate) is a drug for the treatment of type 2 diabetes. Mitiglinide is thought to stimulate insulin secretion by closing the ATP-sensitive K(+) K(ATP) channels in pancreatic beta-cells. Mitiglinide belongs to the meglitinide class of blood glucose-lowering drugs and is currently co-marketed in Japan by Kissei and Takeda.
Targets(IC50)	Potassium Channel

Solubility Information

Solubility	DMSO: 25 mg/mL (35.47 mM), Sonication is recommended. (< 1 mg/ml refers to the product slightly soluble or insoluble)
------------	--

Preparing Stock Solutions

	1mg	5mg	10mg
1 mM	1.4186 mL	7.0931 mL	14.1862 mL
5 mM	0.2837 mL	1.4186 mL	2.8372 mL
10 mM	0.1419 mL	0.7093 mL	1.4186 mL
50 mM	0.0284 mL	0.1419 mL	0.2837 mL

Please select the appropriate solvent to prepare the stock solution, according to the solubility of the product in different solvents. Please use it as soon as possible.

Reference

Malaisse WJ. Expert Opin PharmacOthers. 2008 Oct;9(15):2691-8.

Inhibitor · Natural Compounds · Compound Libraries · Recombinant Proteins

This product is for Research Use Only. Not for Human or Veterinary or Therapeutic Use

Tel: 781-999-4286 E_mail: info@targetmol.com Address: 36 Washington Street, Wellesley Hills, MA 02481