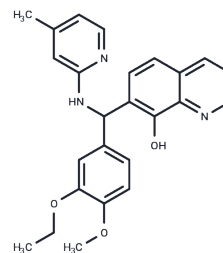


HQ-415

Chemical Properties

CAS No. :	430462-93-4
Formula:	C ₂₅ H ₂₅ N ₃ O ₃
Molecular Weight:	415.48
Appearance:	no data available
Storage:	Powder: -20°C for 3 years In solvent: -80°C for 1 year



Biological Description

Description	HQ-415, a clinically relevant bioactive metal chelator related to clioquinol, has an effective concentration with an EC ₅₀ of 15 μ M.
Targets(IC ₅₀)	Others
In vitro	HQ-415 is active in the TDP-43 model, but CQ was not HQ-161 and HQ-415 is retested in the dose for their ability to rescue TDP-43. HQ-415 strongly synergizes with CQ at multiple concentrations in cells expressing α -syn. CQ fails to synergize with HQ-161 and actually antagonizes HQ-161 rescuing activity, in TDP-43-expressing cells. In contrast, despite the fact that CQ was completely inactive against TDP-43, it strongly synergized with HQ-415, decreasing the EC ₅₀ from 16 to 5 μ M. Both HQ-161 and HQ-415 rescue TDP-43 toxicity. In cells expressing α -syn, HQ-161, despite being inactive on its own, synergized with HQ-415, reducing the EC ₅₀ from 21 to 14 μ M.

Solubility Information

Solubility	DMSO: 5.6 mg/mL (13.48 mM), Sonication and heating are recommended. (< 1 mg/ml refers to the product slightly soluble or insoluble)
------------	---

Preparing Stock Solutions

	1mg	5mg	10mg
1 mM	2.4069 mL	12.0343 mL	24.0685 mL
5 mM	0.4814 mL	2.4069 mL	4.8137 mL
10 mM	0.2407 mL	1.2034 mL	2.4069 mL
50 mM	0.0481 mL	0.2407 mL	0.4814 mL

Please select the appropriate solvent to prepare the stock solution, according to the solubility of the product in different solvents. Please use it as soon as possible.

Reference

Tardiff DF, et al. Different 8-hydroxyquinolines protect models of TDP-43 protein, α -synuclein, and polyglutamine proteotoxicity through distinct mechanisms. J Biol Chem. 2012 Feb 3;287(6):4107-4120.

Inhibitor · Natural Compounds · Compound Libraries · Recombinant Proteins

This product is for Research Use Only. Not for Human or Veterinary or Therapeutic Use

Tel: 781-999-4286 E_mail: info@targetmol.com Address: 36 Washington Street, Wellesley Hills, MA 02481