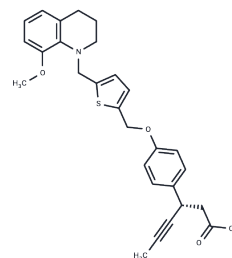


LY2922470

Chemical Properties

CAS No. :	1423018-12-5
Formula:	C ₂₈ H ₂₉ NO ₄ S
Molecular Weight:	475.6
Appearance:	no data available
Storage:	Pure form: -20°C for 3 years In solvent: -80°C for 1 year



Biological Description

Description	LY2922470 is a potent, selective G protein-coupled receptor 40 (GPR40) agonist, with EC ₅₀ s of 7 nM for human GPR40, 1 nM for mouse GPR40 and 3 nM for rat GPR40, respectively. LY2922470 reduces glucose levels along and increases insulin and GLP-1 significantly.
Targets(IC ₅₀)	GPCR

Solubility Information

Solubility	DMSO: 125 mg/mL (262.83 mM), Sonication is recommended. (< 1 mg/ml refers to the product slightly soluble or insoluble)
------------	---

Preparing Stock Solutions

	1mg	5mg	10mg
1 mM	2.1026 mL	10.513 mL	21.0261 mL
5 mM	0.4205 mL	2.1026 mL	4.2052 mL
10 mM	0.2103 mL	1.0513 mL	2.1026 mL
50 mM	0.0421 mL	0.2103 mL	0.4205 mL

Please select the appropriate solvent to prepare the stock solution, according to the solubility of the product in different solvents. Please use it as soon as possible.

Reference

Hamdouchi C, et al. The Discovery, Preclinical, and Early Clinical Development of Potent and Selective GPR40 Agonists for the Treatment of Type 2 Diabetes Mellitus (LY2881835, LY2922083, and LY2922470). J Med Chem. 2016 Dec 22;59(24):10891-10916.

Inhibitor · Natural Compounds · Compound Libraries · Recombinant Proteins

This product is for Research Use Only. Not for Human or Veterinary or Therapeutic Use

Tel: 781-999-4286 E_mail: info@targetmol.com Address: 36 Washington Street, Wellesley Hills, MA 02481