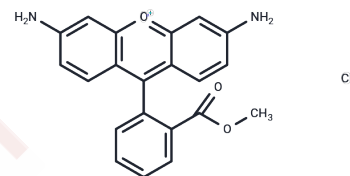


Rhodamine 123

Chemical Properties

| | |
|-------------------|--|
| CAS No. : | 62669-70-9 |
| Formula: | C ₂₁ H ₁₇ ClN ₂ O ₃ |
| Molecular Weight: | 380.83 |
| Appearance: | no data available |
| Storage: | keep away from direct sunlight Powder: -20°C for 3 years In solvent: -80°C for 1 year |



Biological Description

| | |
|---------------|---|
| Description | Rhodamine 123 is a fluorescent dye ($\lambda_{ex}=503$ nm, $\lambda_{em}=527$ nm). |
| Targets(IC50) | Others |
| In vitro | The intensity of R123 fluorescence has a peak at a concentration of 50 μ M and decreases to zero at higher concentrations because of self-quenching[1]. |

Solubility Information

| | |
|------------|---|
| Solubility | DMSO: 30 mg/mL (78.78 mM), Sonication is recommended. (< 1 mg/ml refers to the product slightly soluble or insoluble) |
|------------|---|

Preparing Stock Solutions

| | 1mg | 5mg | 10mg |
|-------|-----------|------------|------------|
| 1 mM | 2.6258 mL | 13.1292 mL | 26.2584 mL |
| 5 mM | 0.5252 mL | 2.6258 mL | 5.2517 mL |
| 10 mM | 0.2626 mL | 1.3129 mL | 2.6258 mL |
| 50 mM | 0.0525 mL | 0.2626 mL | 0.5252 mL |

Please select the appropriate solvent to prepare the stock solution, according to the solubility of the product in different solvents. Please use it as soon as possible.

Reference

- M. Huang, et al. Mitochondrial Inner Membrane Electrophysiology Assessed by Rhodamine-123 Transport and Fluorescence. *Ann Biomed Eng.* 2007 Jul; 35(7): 1276-1285.
- Hou Z, Lin S, Du T, et al. S-72, a Novel Orally Available Tubulin Inhibitor, Overcomes Paclitaxel Resistance via Inactivation of the STING Pathway in Breast Cancer. *Pharmaceuticals*. 2023, 16(5): 749.
- Deciphering Phase-Separated Mitochondrial RNA Granules under Stress Conditions with the Mitochondrion-Targeting Small Molecule

Inhibitor · Natural Compounds · Compound Libraries · Recombinant Proteins

This product is for Research Use Only· Not for Human or Veterinary or Therapeutic Use

Tel:781-999-4286 E_mail:info@targetmol.com Address:36 Washington Street,Wellesley Hills,MA 02481