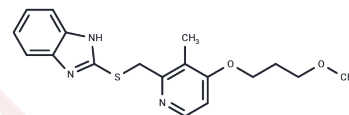


Rabeprazole Sulfide

Chemical Properties

CAS No. : 117977-21-6
 Formula: C₁₈H₂₁N₃O₂S
 Molecular Weight: 343.44
 Appearance: no data available
 Storage: Powder: -20°C for 3 years | In solvent: -80°C for 1 year



Biological Description

Description	Rabeprazole Sulfide (Rabeprazole Related Compound E) is an antiulcer drug in the class of proton pump inhibitors.
Targets(IC50)	Proton pump,Antibacterial

Solubility Information

Solubility	DMSO: 50 mg/mL (145.59 mM),Sonication is recommended. (< 1 mg/ml refers to the product slightly soluble or insoluble)
------------	--

Preparing Stock Solutions

	1mg	5mg	10mg
1 mM	2.9117 mL	14.5586 mL	29.1172 mL
5 mM	0.5823 mL	2.9117 mL	5.8234 mL
10 mM	0.2912 mL	1.4559 mL	2.9117 mL
50 mM	0.0582 mL	0.2912 mL	0.5823 mL

Please select the appropriate solvent to prepare the stock solution, according to the solubility of the product in different solvents. Please use it as soon as possible.

Reference

Ohara T, et al. Helicobacter. 2001 Jun;6(2):125-9.

Kang D, Pang X, Lian W, et al. Discovery of VEGFR2 inhibitors by integrating naïve Bayesian classification, molecular docking and drug screening approaches. RSC Advances. 2018 Jan 8(10): 5286-5297.

Kang D, Pang X, Lian W, et al. Discovery of VEGFR2 inhibitors by integrating naïve Bayesian classification, molecular docking and drug screening approaches[J]. RSC Advances. 2018 Jan 8(10): 5286-5297.

Inhibitor · Natural Compounds · Compound Libraries · Recombinant Proteins

This product is for Research Use Only· Not for Human or Veterinary or Therapeutic Use

Tel:781-999-4286 E_mail:info@targetmol.com Address:36 Washington Street,Wellesley Hills,MA 02481