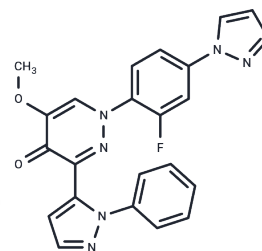


Balipodect

Chemical Properties

CAS No. :	1238697-26-1
Formula:	C23H17FN6O2
Molecular Weight:	428.42
Appearance:	no data available
Storage:	store at low temperature Powder: -20°C for 3 years In solvent: -80°C for 1 year



Biological Description

Description	Balipodect (TAK063) is a highly effective and selective PDE10A inhibitor (IC50: 0.30 nM); Its selectivity is >15000-fold over other PDEs.
Targets(IC50)	PDE
In vivo	TAK-063 has high brain penetration in mice. Oral administration of TAK-063 to mice elevated striatal cAMP and (cGMP) levels at 0.3 mg/kg and shows potent suppression of phencyclidine (PCP)-induced hyperlocomotion at a minimum effective dose (MED) of 0.3 mg/kg. TAK-063 is currently being evaluated in Clinicalal trials for the treatment of schizophrenia[1].
Kinase Assay	Catalytic assay: MEK5 protein isolated from a baculovirus expression system is used to measure kinase activity utilizing PKLight ATP Detection Reagent. The assay is performed using 15 nM GST-MEK5 and 0.75 μ M ATP in assay buffer consisting of 25 mM Hepes, pH 7.5, 10 mM MgCl2, 50 mM KCl, 0.2% BSA, 0.01% CHAPS, 100 μ M Na3VO4, 0.5 mM DTT and 1% DMSO in the presence of varying concentrations of BIX02188. The kinase reaction mixture is incubated for 90 minutes at room temperature followed by addition of 10 μ L of an ATP detection reagent for 15 minutes. The relative light unit (RLU) signal is measured and the RLU signals are converted to percent of control (POC) values for the determination of IC50 value.

Solubility Information

Solubility	H2O: < 1 mg/mL (insoluble or slightly soluble), DMSO: 79 mg/mL (184.4 mM),Sonication is recommended. Ethanol: < 1 mg/mL (insoluble or slightly soluble), (< 1 mg/ml refers to the product slightly soluble or insoluble)
------------	---

Preparing Stock Solutions

	1mg	5mg	10mg
1 mM	2.3342 mL	11.6708 mL	23.3416 mL
5 mM	0.4668 mL	2.3342 mL	4.6683 mL
10 mM	0.2334 mL	1.1671 mL	2.3342 mL
50 mM	0.0467 mL	0.2334 mL	0.4668 mL

Please select the appropriate solvent to prepare the stock solution, according to the solubility of the product in different solvents. Please use it as soon as possible.

Reference

Kunitomo J, et al. J Med Chem. 2014, 57(22):9627-43.

Inhibitor · Natural Compounds · Compound Libraries · Recombinant Proteins

This product is for Research Use Only. Not for Human or Veterinary or Therapeutic Use

Tel: 781-999-4286 E_mail: info@targetmol.com Address: 36 Washington Street, Wellesley Hills, MA 02481