

Esomeprazole sodium

Chemical Properties

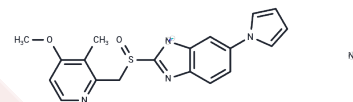
CAS No. : 172152-50-0

Formula: C₁₉H₁₇N₄NaO₂S

Molecular Weight: 388.42

Appearance: no data available

Storage: Powder: -20°C for 3 years | In solvent: -80°C for 1 year



Biological Description

Description	<p>Esomeprazole sodium (EY-81149 sodium), a substituted benzimidazole prodrug, is a selective and irreversible proton pump inhibitor. A weak base, Esomeprazole accumulates in the acidic environment of the secretory canaliculus of the gastric parietal cell where it is converted to an active sulfenamide form that binds to cysteine sulfhydryl groups on the luminal aspect of the proton pump hydrogen-potassium adenosine triphosphatase (H⁺/K⁺ ATPase), thereby inhibiting the pump's activity and the parietal cell secretion of H⁺ ions into the gastric lumen, the final step in gastric acid production.</p>
Targets(IC50)	Proton pump, TOPK

Solubility Information

Solubility	<p>DMSO: 71 mg/mL (182.79 mM), Sonication is recommended. H₂O: 50 mg/mL (128.73 mM), Sonication is recommended. (< 1 mg/ml refers to the product slightly soluble or insoluble)</p>
------------	---

Preparing Stock Solutions

	1mg	5mg	10mg
1 mM	2.5745 mL	12.8727 mL	25.7453 mL
5 mM	0.5149 mL	2.5745 mL	5.1491 mL
10 mM	0.2575 mL	1.2873 mL	2.5745 mL
50 mM	0.0515 mL	0.2575 mL	0.5149 mL

Please select the appropriate solvent to prepare the stock solution, according to the solubility of the product in different solvents. Please use it as soon as possible.

Reference

Seo KA, et al. Xenobiotica. 2012 Mar;42(3):278-84.

Inhibitor · Natural Compounds · Compound Libraries · Recombinant Proteins

This product is for Research Use Only· Not for Human or Veterinary or Therapeutic Use

Tel:781-999-4286 E_mail:info@targetmol.com Address:36 Washington Street,Wellesley Hills,MA 02481