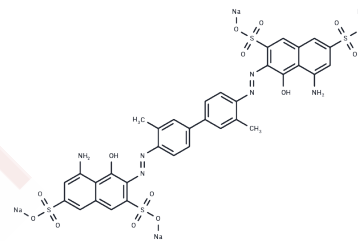


## Diphenyl Blue

## Chemical Properties

CAS No. : 72-57-1  
 Formula: C<sub>34</sub>H<sub>24</sub>N<sub>6</sub>Na<sub>4</sub>O<sub>14</sub>S<sub>4</sub>  
 Molecular Weight: 960.81  
 Appearance: no data available  
 Storage: keep away from direct sunlight  
 Powder: -20°C for 3 years | In solvent: -80°C for 1 year



## Biological Description

Description	Diphenyl Blue (Direct Blue 14) (Direct Blue 14) is used as a dye for a group of azo dye.
Targets(IC50)	Others

## Solubility Information

Solubility	H <sub>2</sub> O: 10 mg/mL (10.41 mM), Sonication is recommended. DMSO: 8 mg/mL (8.33 mM), Sonication is recommended. ( $< 1$ mg/ml refers to the product slightly soluble or insoluble)
------------	--

## Preparing Stock Solutions

	1mg	5mg	10mg
1 mM	1.0408 mL	5.2039 mL	10.4079 mL
5 mM	0.2082 mL	1.0408 mL	2.0816 mL
10 mM	0.1041 mL	0.5204 mL	1.0408 mL
50 mM	0.0208 mL	0.1041 mL	0.2082 mL

Please select the appropriate solvent to prepare the stock solution, according to the solubility of the product in different solvents. Please use it as soon as possible.

## Reference

Gao P, Sun C. Fast and efficient molecule delivery into *Euglena gracilis* mediated by cell-penetrating peptide or dimethyl sulfoxide. *FEBS Open bio*. 2023

**Inhibitor · Natural Compounds · Compound Libraries · Recombinant Proteins**

This product is for Research Use Only · Not for Human or Veterinary or Therapeutic Use

Tel: 781-999-4286 E\_mail: info@targetmol.com Address: 36 Washington Street, Wellesley Hills, MA 02481