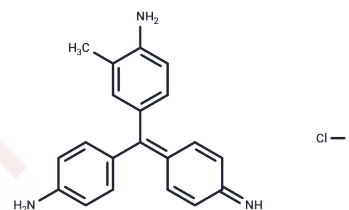


Fuchsine base monohydrochloride

Chemical Properties

CAS No. : 632-99-5
 Formula: C₂₀H₂₀ClN₃
 Molecular Weight: 337.85
 Appearance: no data available
 Storage: keep away from direct sunlight
 Powder: -20°C for 3 years | In solvent: -80°C for 1 year



Biological Description

Description	Fuchsine base monohydrochloride (Rosaniline Base monohydrochloride) is a magenta dye and uses for acid-fast staining with carbol-fuchsin.
Targets(IC50)	Others
Cell Research	<p>1. Carbol Fuchsin Staining Method</p> <ol style="list-style-type: none"> 1. Prepare the carbol fuchsin solution, which consists of fuchsine and phenol. 2. Drop the dye solution on the sample on the slide. 3. Heat the sample and maintain a certain temperature (such as around 60°C) to allow the dye to penetrate the cell structure. 4. Stain for about 5-10 minutes. 5. Then use acid alcohol (usually 3% hydrochloric acid alcohol) to decolorize and remove unwanted staining. 6. Finally, use contrast staining such as methylene blue or Gram staining for final observation. <p>2. Acid-fast staining:</p> <ol style="list-style-type: none"> 1. Because carbol fuchsin has a strong affinity with acid and alcohol, it is often used to stain acid-fast bacteria (such as Mycobacterium tuberculosis). 2. These bacteria can remain red during the staining process, while other bacteria are removed and appear blue or other colors.

Solubility Information

A DRUG SCREENING EXPERT

Solubility	DMSO: 55 mg/mL (162.79 mM),Sonication is recommended. (< 1 mg/ml refers to the product slightly soluble or insoluble)
------------	--

Preparing Stock Solutions

	1mg	5mg	10mg
1 mM	2.9599 mL	14.7995 mL	29.5989 mL
5 mM	0.592 mL	2.9599 mL	5.9198 mL
10 mM	0.296 mL	1.4799 mL	2.9599 mL
50 mM	0.0592 mL	0.296 mL	0.592 mL

Please select the appropriate solvent to prepare the stock solution, according to the solubility of the product in different solvents. Please use it as soon as possible.

Inhibitor · Natural Compounds · Compound Libraries · Recombinant Proteins

This product is for Research Use Only· Not for Human or Veterinary or Therapeutic Use

Tel:781-999-4286 E_mail:info@targetmol.com Address:36 Washington Street,Wellesley Hills,MA 02481