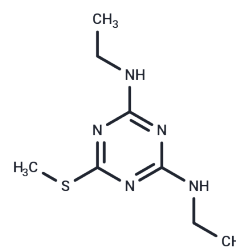


## Simetryn

### Chemical Properties

CAS No. :	1014-70-6
Formula:	C <sub>8</sub> H <sub>15</sub> N <sub>5</sub> S
Molecular Weight:	213.3
Appearance:	no data available
Storage:	Powder: -20°C for 3 years   In solvent: -80°C for 1 year



### Biological Description

Description	Simetryn is a rice paddy herbicide and acts as a chemical stressor retarding tadpole growth and development without disrupting thyroid functions, even at 1/100 of the 96-h LC50 value.
Targets(IC50)	Others

### Solubility Information

Solubility	DMSO: 36 mg/mL (168.78 mM), Sonication is recommended. (< 1 mg/ml refers to the product slightly soluble or insoluble)
------------	---

### Preparing Stock Solutions

	1mg	5mg	10mg
1 mM	4.6882 mL	23.4412 mL	46.8823 mL
5 mM	0.9376 mL	4.6882 mL	9.3765 mL
10 mM	0.4688 mL	2.3441 mL	4.6882 mL
50 mM	0.0938 mL	0.4688 mL	0.9376 mL

Please select the appropriate solvent to prepare the stock solution, according to the solubility of the product in different solvents. Please use it as soon as possible.

### Reference

Saka M, et al. Application of an amphibian (*Silurana tropicalis*) metamorphosis assay to the testing of the chronic toxicity of three rice paddy herbicides: simetryn, mefenacet, and thiobencarb. *Ecotoxicol Environ Saf.* 2013 Jun;92: 135-43.

Saka M. Acute toxicity of rice paddy herbicides simetryn, mefenacet, and thiobencarb to *Silurana tropicalis* tadpoles. *Ecotoxicol Environ Saf.* 2010 Sep;73(6):1165-9.

**Inhibitor · Natural Compounds · Compound Libraries · Recombinant Proteins**

**This product is for Research Use Only. Not for Human or Veterinary or Therapeutic Use**

Tel: 781-999-4286 E\_mail: info@targetmol.com Address: 36 Washington Street, Wellesley Hills, MA 02481