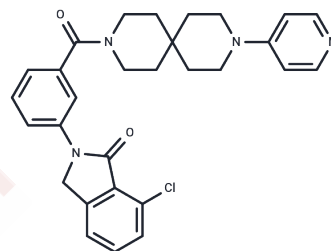


ELN-441958

Chemical Properties

CAS No. : 913064-47-8
 Formula: C₂₉H₂₉ClN₄O₂
 Molecular Weight: 501.02
 Appearance: no data available
 Storage: Powder: -20°C for 3 years | In solvent: -80°C for 1 year



Biological Description

Description	ELN-441958 is a potent, neutral antagonist of the B1 receptor, inhibiting the binding of the B1 agonist ligand [3H]DAKD to IMR-90 cells with a K _i of 0.26 nM. ELN-441958 (ELN 441958) is highly selective for B1 over B2 receptors.
Targets(IC ₅₀)	Bradykinin Receptor
Kinase Assay	IGF-IR Peptide Autophosphorylation: One microgram of constitutively active IGF-IR kinase domain peptide is incubated +/- varying concentrations of PQ 401 in 2% DMSO in 40 mM Tris (pH 7.4), 80 μM EGTA, 0.25% 2-mercaptoethanol, 80 μM Na ₃ VO ₄ , 10 mM MgCl ₂ , and 2 mM MnCl ₂ for 20 minutes. ATP is then added at a final concentration of 20 μM. Autophosphorylation of the kinase domain peptide is allowed to occur for 20 minutes at 22°C. The reaction is stopped by the addition of SDS-reducing buffer and the samples are run on SDS-PAGE. Following transfer to nitrocellulose membrane, peptide autophosphorylation is determined by Western blotting employing an antibody against phosphotyrosine (PY20).

Solubility Information

Solubility	DMSO: 5.01 mg/mL (10 mM), Sonication is recommended. (< 1 mg/ml refers to the product slightly soluble or insoluble)
------------	---

Preparing Stock Solutions

	1mg	5mg	10mg
1 mM	1.9959 mL	9.9796 mL	19.9593 mL
5 mM	0.3992 mL	1.9959 mL	3.9919 mL
10 mM	0.1996 mL	0.998 mL	1.9959 mL
50 mM	0.0399 mL	0.1996 mL	0.3992 mL

Please select the appropriate solvent to prepare the stock solution, according to the solubility of the product in different solvents. Please use it as soon as possible.

Reference

Hawkinson JE, et al. J Pharmacol Exp Ther.2007 Aug;322(2):619-630.

Inhibitor · Natural Compounds · Compound Libraries · Recombinant Proteins

This product is for Research Use Only· Not for Human or Veterinary or Therapeutic Use

Tel:781-999-4286 E_mail:info@targetmol.com Address:36 Washington Street,Wellesley Hills,MA 02481