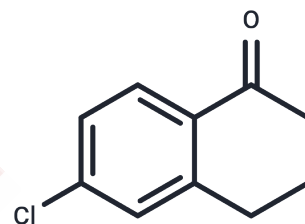


6-Chloro-1-tetralone

Chemical Properties

CAS No. :	26673-31-4
Formula:	C ₁₀ H ₉ ClO
Molecular Weight:	180.63
Appearance:	Viscous
Storage:	Pure form: -20°C for 3 years In solvent: -80°C for 1 year



Biological Description

Description	6-Chloro-1-tetralone (6-chloro-3;5-Chloro-1-Indomone) is an important intermediate for the synthesis of pharmaceutical compounds.
Targets(IC50)	Others

Solubility Information

Solubility	H ₂ O: Insoluble, DMSO: 60 mg/mL (332.17 mM), Sonication is recommended. (< 1 mg/ml refers to the product slightly soluble or insoluble)
------------	---

Preparing Stock Solutions

	1mg	5mg	10mg
1 mM	5.5362 mL	27.6809 mL	55.3618 mL
5 mM	1.1072 mL	5.5362 mL	11.0724 mL
10 mM	0.5536 mL	2.7681 mL	5.5362 mL
50 mM	0.1107 mL	0.5536 mL	1.1072 mL

Please select the appropriate solvent to prepare the stock solution, according to the solubility of the product in different solvents. Please use it as soon as possible.

Inhibitor · Natural Compounds · Compound Libraries · Recombinant Proteins

This product is for Research Use Only. Not for Human or Veterinary or Therapeutic Use

Tel: 781-999-4286 E_mail: info@targetmol.com Address: 34 Washington Street, Wellesley Hills, MA 02481