

Eprosartan Mesylate

Chemical Properties

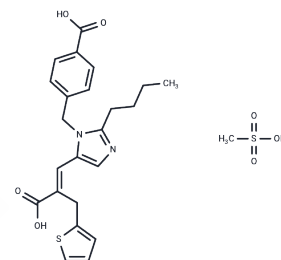
CAS No. : 144143-96-4

Formula: C₂₃H₂₄N₂O₄S·CH₄O₃S

Molecular Weight: 520.62

Appearance: no data available

Storage: Powder: -20°C for 3 years | In solvent: -80°C for 1 year



Biological Description

Description	Eprosartan Mesylate (SKF-108566J) is a competitive and reversible Angiotensin II Receptor Blocker.
Targets(IC ₅₀)	RAAS
In vitro	In a study involving brain and spinal cord injured rats, Eprosartan (0.3 mg/kg i.v.) was observed to induce a hypertensive response following spinal cord stimulation.
In vivo	Eprosartan effectively inhibits [125I]-Angiotensin II in human tissues (adrenal cortex, liver, cloned AT ₁ receptors) with an IC ₅₀ range of 1.4-3.9 nM and in rat tissues (mesenteric artery, adrenal cortex, glomeruli) with an IC ₅₀ range of 1.5-9.2 nM. In isolated perfused proximal tubules of rabbits, Eprosartan (100 nM) completely blocks the isosmotic fluid absorption induced by Angiotensin II.

Solubility Information

Solubility	Ethanol: 4 mg/mL (7.68 mM), Sonication is recommended. DMSO: 104 mg/mL (199.76 mM), Sonication is recommended. (< 1 mg/ml refers to the product slightly soluble or insoluble)
------------	--------------------------------------------------------------------------------------------------------------------------------------------------------------------------------------

Preparing Stock Solutions

	1mg	5mg	10mg
1 mM	1.9208 mL	9.6039 mL	19.2079 mL
5 mM	0.3842 mL	1.9208 mL	3.8416 mL
10 mM	0.1921 mL	0.9604 mL	1.9208 mL
50 mM	0.0384 mL	0.1921 mL	0.3842 mL

Please select the appropriate solvent to prepare the stock solution, according to the solubility of the product in different solvents. Please use it as soon as possible.

Reference

Plosker GL, et al. Drugs, 2000, 60(1), 177-201.

Ohlstein EH, et al. Pharmacology, 1997, 55(5), 244-251.

Inhibitor · Natural Compounds · Compound Libraries · Recombinant Proteins

This product is for Research Use Only· Not for Human or Veterinary or Therapeutic Use

Tel:781-999-4286

E_mail:info@targetmol.com

Address:36 Washington Street,Wellesley Hills,MA 02481