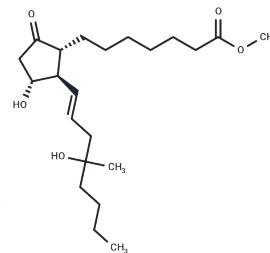


Misoprostol

Chemical Properties

CAS No. :	59122-46-2
Formula:	C ₂₂ H ₃₈ O ₅
Molecular Weight:	382.53
Appearance:	no data available
Storage:	store at low temperature, keep away from moisture Powder: -20°C for 3 years In solvent: -80°C for 1 year



Biological Description

Description	Misoprostol, a prostaglandin E1 derivative, has a strong inhibitory effect on gastric acid secretion, while having a contractile effect on pregnancy.
Targets(IC50)	Prostaglandin Receptor

Solubility Information

Solubility	DMSO: > 10 mM, Sonication is recommended. (< 1 mg/ml refers to the product slightly soluble or insoluble)
------------	--

Preparing Stock Solutions

	1mg	5mg	10mg
1 mM	2.6142 mL	13.0709 mL	26.1417 mL
5 mM	0.5228 mL	2.6142 mL	5.2283 mL
10 mM	0.2614 mL	1.3071 mL	2.6142 mL
50 mM	0.0523 mL	0.2614 mL	0.5228 mL

Please select the appropriate solvent to prepare the stock solution, according to the solubility of the product in different solvents. Please use it as soon as possible.

Inhibitor · Natural Compounds · Compound Libraries · Recombinant Proteins

This product is for Research Use Only. Not for Human or Veterinary or Therapeutic Use

Tel: 781-999-4286 E_mail: info@targetmol.com Address: 36 Washington Street, Wellesley Hills, MA 02481