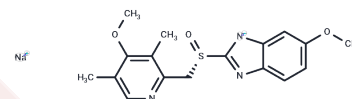


Esomeprazole Sodium

Chemical Properties

CAS No. :	161796-78-7
Formula:	C ₁₇ H ₁₈ N ₃ O ₃ S·Na
Molecular Weight:	367.4
Appearance:	no data available
Storage:	Powder: -20°C for 3 years In solvent: -80°C for 1 year



Biological Description

Description	Esomeprazole Sodium ((S)-Omeprazole sodium) is the S-isomer of omeprazole with selective and irreversible proton pump inhibitor activity. Esomeprazole acts as an exosome inhibitor by blocking the exosome release via the inhibition of V-H ⁺ -ATPases
Targets(IC ₅₀)	ATPase, Proton pump

Solubility Information

Solubility	H ₂ O: 67 mg/mL (182.36 mM), Sonication is recommended. Ethanol: 68 mg/mL (185.08 mM), Sonication is recommended. DMSO: 60 mg/mL (163.31 mM), Sonication is recommended. (< 1 mg/ml refers to the product slightly soluble or insoluble)
------------	---

Preparing Stock Solutions

	1mg	5mg	10mg
1 mM	2.7218 mL	13.6091 mL	27.2183 mL
5 mM	0.5444 mL	2.7218 mL	5.4437 mL
10 mM	0.2722 mL	1.3609 mL	2.7218 mL
50 mM	0.0544 mL	0.2722 mL	0.5444 mL

Please select the appropriate solvent to prepare the stock solution, according to the solubility of the product in different solvents. Please use it as soon as possible.

Reference

Kumar P, et al. Drug Deliv Transl Res. 2015 Jun;5(3):243-56.

Inhibitor · Natural Compounds · Compound Libraries · Recombinant Proteins

This product is for Research Use Only · Not for Human or Veterinary or Therapeutic Use

Tel: 781-999-4286 E_mail: info@targetmol.com Address: 36 Washington Street, Wellesley Hills, MA 02481